

INTRODUCING THE 0872E3 ICE DETECTOR

Campbell Scientific Canada (CSC) is pleased to have secured worldwide distribution rights for the Goodrich (formerly Rosemount) Ice Detectors. Goodrich is the leading provider of ice detection sensors to the aerospace industry and CSC is now marketing this same technology for ground-based applications. Our clients in wind energy, power generation, road weather industries, and many others will be excited about the addition of this item to our existing rugged and reliable line of products. Call or [email us](#) today for more information on this [innovative ice detector](#).



0872E3 by Goodrich

CR1000 data on the Internet, just like magic!

Whether for email, shopping, work, or entertainment, most people deal with the Internet on a daily basis; nevertheless, the average person knows very little about the elusive workings of this complex system. That is why Ryan Campbell of Campbell Scientific, Inc. (CSI) initially found the task of making his CR1000's data available on an Internet web page overwhelming, if not impossible. However, after talking with the Applications Engineers and his colleagues at CSI, Ryan discovered that the task could be made incredibly easy by using the NL115 Ethernet Interface and CompactFlash® module. To find out how Ryan did it, click the link to visit http://www.campbellsci.ca/CampbellScientific/Products_CR1000.html

4 year Extended Warranty, now available!

Testimony to the dependability of our products... Campbell Scientific Canada is now offering an optional 4 year extended warranty on select dataloggers and peripherals! These details and more are included on our May 1, 2007 release of our 2007-2008 Price Lists. [Contact us](#) today to request your copy.

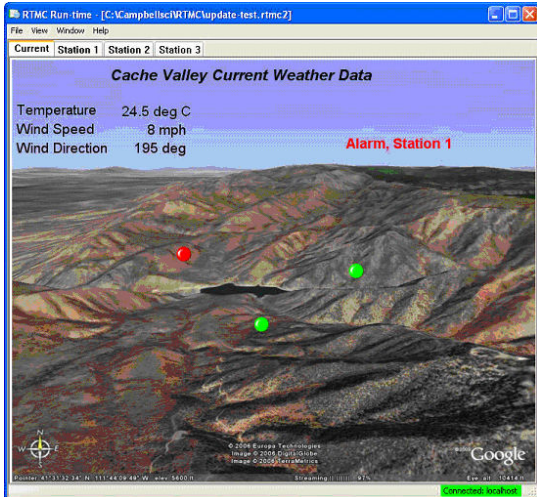
Where in the World is Campbell Scientific?

June 25-28, 2007	CWRA 60 th Annual Conference	Saskatoon, SK
August 12-18, 2007	30 th Congress of the International Association of Theoretical and Applied Limnology	Montreal, QC
Sept 30 – Oct 3, 2007	Canadian Wind Energy Association 2007 Conference	Quebec City, QC

*for information on training courses we are holding, visit our website [courses & shows section](#)

New CR1000 summer course – July 18-19! Due to popular demand, a summer session of the CR1000 course covering the new datalogger language has been added to our course calendar. This course will sell out fast, so [contact us](#) today to reserve your spot!

RTMC Pro – a great product gets even BETTER!



Many LoggerNet users are familiar with RTMC (Real-Time Monitoring and Control) software that is included with LoggerNet. They've come to appreciate the flexibility of this easy-to-use software package that lets them analyze their data on screen by displaying variables and final storage data in the form of graphs, dials, status bars, visual alarms, and tables. This good thing is now even better! RTMC Pro is an enhanced version of RTMC that includes more powerful alarm capabilities, more layout components, the ability to send an email message on an alarm event, and even insert HTML hotspots for better computer displays or for use on a website!

Visit our website and check out our [RTMC Pro](#) product page, then download a demo version from our downloads page to see it in action for yourself.

LoggerNet for Linux

CSC has often been asked if we have a version of our datalogger support software that runs on a Linux platform, so we're happy to announce that a Linux version has now been released. Our [LNLinux](#) package includes a Linux version of the LoggerNet server and a copy of LoggerNet Remote. It handles all communication and data collection with the dataloggers and the collected data is stored on the Linux computer. Together, these two systems offer a solution for those who wish to run in a Linux environment.

Our Application Technicians are here to help!

Here at CSC we have a staff of 8 bilingual Application Technicians who are highly skilled and specially trained to assist you in many ways. Whatever your measurement application or data requirements, they can help with product knowledge, custom designing your system and offering training to make sure you get the most out of your investment. From writing or debugging datalogger programs to testing products and systems, even writing and reviewing product manuals, we appreciate the opportunity to serve you and are dedicated to finding effective solutions to your measurement questions.

We invite you to visit our website at www.campbellsci.ca for more information presented in several forums: case studies, white papers, application notes, and even downloads of updated software and operating systems.

SERVICE – it's 9/10 of our sales equation.

Our Fall newsletter will have information on foreign language versions of LoggerNet.

Some content for this edition of the Campbell Scientific Canada News was contributed by Campbell Scientific, Inc.

11564 – 149 Street Edmonton, AB T5M 1W7 780-454-2505
www.campbellsci.ca

