



**CAMPBELL SCIENTIFIC**  
CANADA CORP.

11564 - 149 street - edmonton - alberta - T5M 1W7  
tel 780.454.2505 fax 780.454.2655  
[www.campbellsci.ca](http://www.campbellsci.ca)



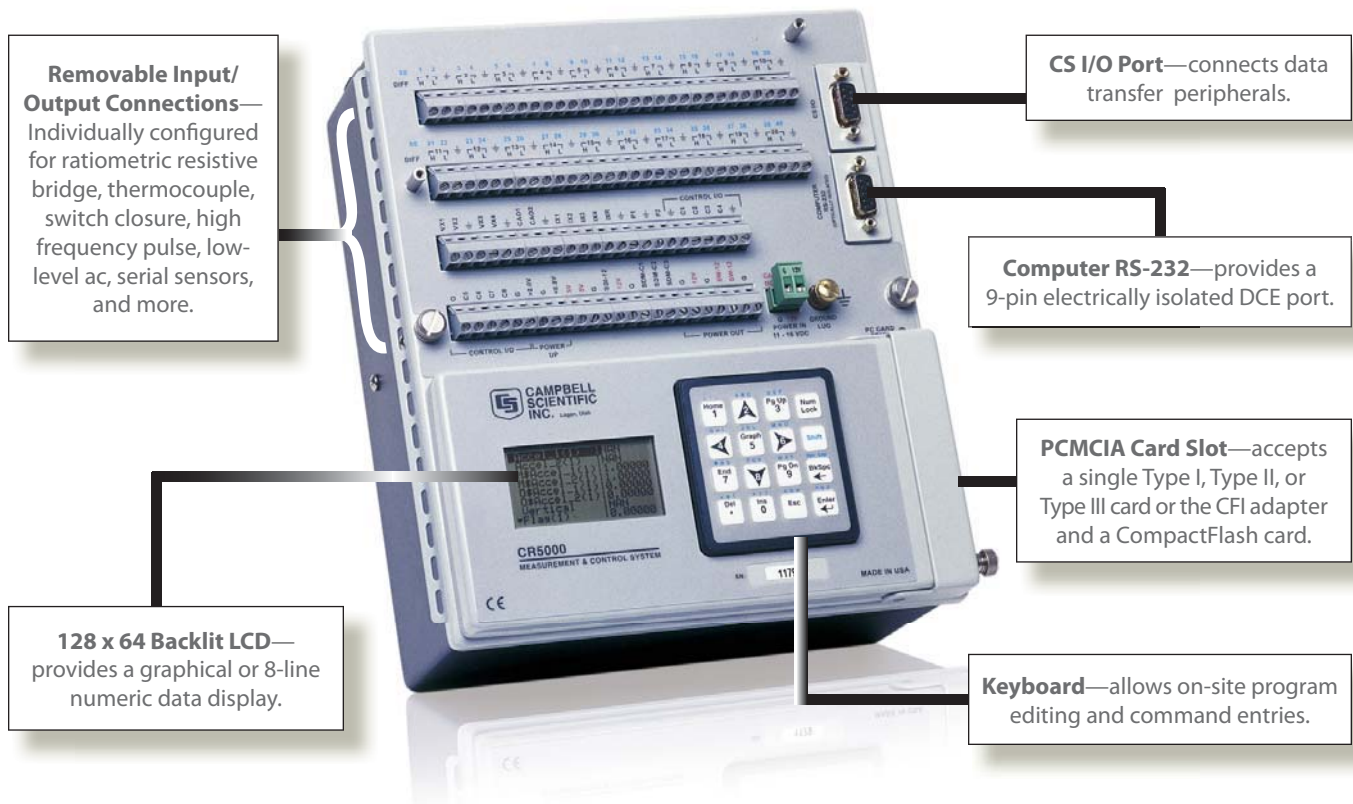
# CR5000

## Measurement & Control System

A rugged,  
high-performance  
data acquisition  
system

# CR5000 Measurement and Control System

The CR5000 Measurement and Control System is a self-contained, low power, rugged datalogger that is capable of a maximum throughput of 5 kHz. Standard operating range is -25° to +50°C; an optional extended range of -40° to +85°C is available.



## Design Features

- Stand-alone unit offering high performance and an environmentally rugged design
- Maximum throughput of 2k to 5k measurements per second (configuration dependant)
- Powerful instruction set that supports measurement of most sensor types, on-board processing, data reduction, and intelligent control
- Backlit display allowing numerical or graphical display of stored data
- PCMCIA card slot for extended data storage and transporting data to a PC
- Battery-backed SRAM memory and clock ensuring data, programs, and accurate time are maintained while the CR5000 is disconnected from its main power source
- Robust ESD protection
- Low power, 12 Vdc operation
- Data values stored in tables with a time stamp and record number

## Operating System/Logic Control

The on-board operating system includes measurement, processing, and output instructions for programming the datalogger. The programming language, CRBasic, uses a BASIC-like syntax. Measurement instructions specific to bridge configurations, voltage outputs, thermocouples, and pulse/frequency signals are included. Processing instructions support algebraic, statistical, and transcendental functions for on-site processing. Output instructions process data over time and control external devices. These instructions include averages, maximums, minimums, standard deviations, histograms, rainflow histograms, level crossings, and Fast Fourier Transfers (FFTs).

## Data Storage Capacity

Data and multiple programs are stored on-board in battery-backed SRAM. Data is stored in a table format. Up to 900,000 low-resolution data points can be stored in its CPU memory. Storage capacity can be increased by using a PC or CompactFlash card.

## Input Output Terminals

### *Analog Inputs*

Twenty differential (40 single-ended) input channels support five full-scale ranges ( $\pm 20$  mV to  $\pm 5000$  mV) at 16-bit measurement resolution. Larger signal voltages are accommodated with precision 2:1 and 10:1 input voltage divider modules.

### *Pulse Counters*

Two 16-bit pulse channels count switch closures, low level ac pulses, and high frequency square waves.

### *Switched Excitation Outputs*

Four switched voltage and four switched current outputs provide precision excitation for ratiometric sensor/bridge measurements.

### *Digital I/O Ports*

Eight ports have multiple functions including digital control output, interrupt, pulse counting, switch closure, frequency/period measurements, and edge timing communication. One other port is dedicated for SDI-12 measurements, and three additional ports are dedicated for measuring SDM devices.

### *Continuous Analog Outputs*

Two continuous analog outputs provide voltage levels to displays or proportional controllers.

### *RS-232 Port*

The RS-232 port is for connecting a PC, serial sensor, or RS-232 modem. The PC attaches to the CR5000 via an RS-232 cable—no interface required. This port isolates the PC's electrical system from the datalogger, thereby protecting against ground loops, normal static discharge, and noise.

### *CS I/O Port*

Many communication devices connect with the CR5000 via this port. A PC may also connect with this port, but an SC32B or SC-USB interface is required.

### *Power Connections*

The continuous 5 V and 12 V terminals are for connecting sensors and non-Campbell Scientific peripherals. Two switched 12 V terminals are program controlled.

## Transient Protection

Rugged gas tubes protect all terminal block inputs and outputs from electrical transients. The CR5000 is CE compliant under the European Union's EMC Directive.

## PCMCIA Card Slot

The PCMCIA card slot supports one Type I, Type II, or Type III PC Card or the CF1 adapter and one CompactFlash (CF) card. The card can be used to expand the CR5000's storage capacity or transport data or programs to a PC.

The storage capacity of Type II cards exceeds 1 GB. Type III cards provide data storage capacities exceeding 1 GB but may not be suitable for all environments. Campbell Scientific offers CF cards that store up to 2 GB of data.

## Enclosures

The CR5000 can be housed in an ENC14/16 and ENC16/18 enclosure. A CR5000 housed in a weather-resistant enclosure can collect data under extremely harsh conditions. The enclosure protects the CR5000 from dust, water, sunlight, or pollutants. An internal mounting plate is prepunched for easy system configuration and exchange of equipment in the field.

## Operating Temperature Ranges

Standard operating range is  $-25^{\circ}$  to  $+50^{\circ}\text{C}$ ; an extended range of  $-40^{\circ}$  to  $+85^{\circ}\text{C}$  is available. The rechargeable battery base has a different temperature range (see below).

## Battery Base Options

### *Rechargeable Base*

The rechargeable base includes an internal 7-Ahr sealed rechargeable battery that can be charged from vehicle power, solar panels, or ac power. Operating temperature range is  $-40^{\circ}$  to  $+60^{\circ}\text{C}$ .

When using vehicle power, our DCDC18R Boost Regulator is used to increase the vehicle's supply voltage to charging levels required by the CR5000.



### *Low-Profile Base (no battery)*

The low-profile base requires a user-supplied dc source. It is preferred when the system's power consumption needs a larger capacity battery or when it's advantageous to have a thinner, lighter datalogger.

## Data Storage and Retrieval Options

To determine the best option for an application, consider the accessibility of the site, availability of services (e.g., cellular phone or satellite coverage), quantity of data to collect, and desired time between data-collection sessions. Some communication options can be combined—increasing the flexibility, convenience, and reliability of the communications.

### *PC Cards or CF Cards*

The CR5000 can store data and programs on a PC card or CF card. The card can then be carried to a computer. The computer directly reads PC cards via its PCMCIA card slot. CF cards are read using either a CF1 adapter or the 17752 Reader/Writer. Please note that the CF card should be industrial-grade with a storage capacity of 2 GB or less.



The CF1 adapter (at left) allows the PCMCIA slot in the CR5000 datalogger to receive CF cards. Campbell Scientific offers 256 Mbyte, 1 Gbyte (shown at right), and 2 Gbyte industrial-grade CompactFlash cards to be used with the CF1.

### *Direct Links*

A PC or laptop can be connected directly to the datalogger's RS-232 port (no interface required). This port provides optical isolation. Alternatively, the PC or laptop can be connected to the CR5000's CS I/O port via an SC32B or SC-USB interface.

### *Keyboard Display*

The CR5000's integrated keyboard display is used to program the datalogger, manually initiate data transfer, and display data. It displays 8 lines x 21 characters (64 x 128 pixels) and has a 16-character keyboard. Custom menus are supported allowing customers to set up choices within the datalogger program that can be initiated by a simple "toggle" or "pick list".

### *Ethernet*

The NL100 interface enables a CR5000 datalogger to communicate over a local network or a dedicated Internet connection via TCP/IP.

### *Short Haul Modems*

The SRM-5A RAD Short Haul Modem supports communications between the datalogger and a PC via a four-wire unconditioned line (two twisted pairs).

### *Multidrop Interface*

The MD485 intelligent RS-485 interface allows a PC to address and communicate with one or more dataloggers over a single two-twisted-pair cable. Distances up to 4000 feet are supported.

### *Spread Spectrum Radios*

Spread spectrum radios provide communications between a base station computer and several field sites over short distances. Line-of-sight is required.

### *Telephone Networks*

The CR5000 can communicate with a PC using landlines, cellular CDMA, or cellular GPRS transceivers. Telephone networks can be combined with spread spectrum radios, multidrop modems, and Ethernet interfaces, which extends the distance between datalogger and PC.

### *Satellite Transmitters*

Our NESDIS-certified GOES satellite transmitter supports one-way communications from a Data Collection Platform (DCP) to a receiving station.



A GOES satellite system transmits data from a weather station on Nevado Sajama, Bolivia, to climate researchers in the United States.

## Channel Expansion

### Multiplexers

Multiplexers increase the number of sensors that can be measured by a datalogger by sequentially connecting each sensor to the datalogger. Several multiplexers can be controlled by a single datalogger. The CR5000 is compatible with the AM16/32B and AM25T multiplexers.

### Synchronous Devices for Measurement (SDMs)

SDMs are addressable peripherals that expand the datalogger's measurement and control capabilities. For example, SDMs are available to add control ports, analog outputs, pulse count channels, interval timers, or even a CANbus interface to the system. Multiple SDMs, in any combination, can be connected to one datalogger.



The SDM-CAN (left of CR5000) allows a vehicle's on-board diagnostic system to output standardized data streams that are synchronized with other measurements and stored in the CR5000.

## Software

### Starter Software

Our easy-to-use starter software is intended for first time users or applications that don't require sophisticated communications or datalogger program editing. SCWin Short Cut generates straight-forward CR5000 programs in four easy steps. PC200W allows customers to transfer a program to, or retrieve data from a CR5000 via a direct communications link.

At [www.campbellsci.com/downloads](http://www.campbellsci.com/downloads), you can download starter software at no charge. Our Resource CD also provides this software as well as PDF versions of our brochures and manuals.

### Datalogger Support Software

Our datalogger support software packages provide more capabilities than our starter software. These software packages contains program editing, communications, and display tools that can support an entire datalogger network.

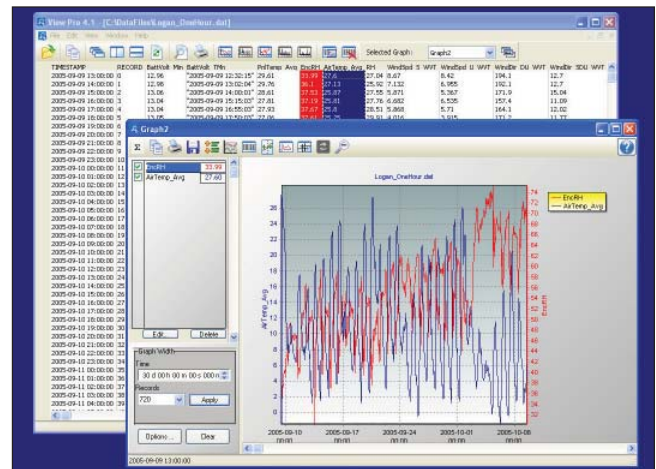


Short Cut is available from our website (at no charge) and Resource CD. It is also bundled with PC200W, PC400, LoggerNet, and RTDAQ Software.

PC400, our mid-level software, supports a variety of telemetry options, manual data collection, and data display. For programming, it includes both Short Cut and the CRBasic program editor. PC400 does not support combined communication options (e.g., phone-to-RF) or scheduled data collection.

RTDAQ is an ideal solution for industrial and real-time users desiring to use reliable data collection software over a single telecommunications medium, and who do not rely on scheduled data collection. RTDAQ's strength lies in its ability to handle the display of high speed data.

LoggerNet is Campbell Scientific's full-featured datalogger support software. It is referred to as "full-featured" because it provides a way to accomplish almost all the tasks you'll need to complete when using a datalogger. LoggerNet supports combined communication options (e.g., phone-to-RF) and scheduled data collection.



Both LoggerNet and RTDAQ use View Pro to display historical data in a tabular or graphical format.

## Applications

### *Open Path Eddy Covariance Systems*

These systems use eddy covariance techniques to calculate water vapor, carbon dioxide, and heat flux.



For eddy covariance applications, the CR5000 can measure the EC150 Open-Path CO<sub>2</sub> Analyzer, CSAT3A Sonic Anemometer, and KH20 Krypton Hygrometer then compute fluxes on-line.

Below are the sensors used and their measurements:

- CSAT3A Sonic Anemometer—absolute wind and sonic temperature fluctuations
- KH20 Hygrometer—fluctuations of atmospheric water vapor
- EC150 Open Path Gas Analyzer—both absolute CO<sub>2</sub> and water vapor
- FW05 Fine Wire Thermocouple—absolute temperature

The CR5000 measures the above sensors and computes fluxes on-line. The raw time-series data can be saved to a PC-card, along with processed data for later analysis. A PC at the site is not required. The CR5000's storage capacity can be increased using PC cards.

### *Structural and Seismic Monitoring*

The CR5000 can be used in applications ranging from simple beam fatigue analysis, to structural mechanics research, to continuous monitoring of large, complex structures. The on-board instruction set supports many algorithms and math functions that are useful for structural and seismic monitoring.

The datalogger can store data as rainflow or level crossing histograms. The rainflow and level crossing algorithms can be processed for extended periods of time, not just a finite number of cycles.

The datalogger's control functions allow it to activate alarms, actuate electrical devices, or shut down equipment based on time or measured conditions.

Typical sensors used for structural and seismic monitoring include:

- Carlson strain meters
- Foil strain gages (set up in quarter, half, or full bridge strain configurations)
- Inclinometers
- Crack and joint sensors
- Tilt sensors
- Piezoresistive accelerometers
- Piezoelectric accelerometers
- Capacitive accelerometers
- Borehole accelerometers
- Servo force balance accelerometers



Cracks in the walls of Castillo de San Marcos, Florida were instrumented to determine their genesis and the best course for corrective action.

### Vehicle Monitoring and Testing

The versatile, rugged design and low power requirements of the CR5000 datalogger make it well suited for vehicle monitoring. It excels in cold and hot temperature, high altitude, off-highway, and cross-country performance testing. The CR5000 is compatible with our SDM-CAN interface.

Compatible sensors often used for vehicle monitoring and testing include thermocouples, pressure transducers, GPS receivers, pulse pick-ups, flow transducers, potentiometers, strain gages, load cells, digital switches, accelerometers, LVDTs, and tilt sensors. Most sensors connect directly to the datalogger, eliminating costly external signal conditioning.



Photo courtesy Case Corporation

Vehicle monitoring includes not only passenger cars but locomotives, airplanes, helicopters, tractors, buses, heavy trucks, drilling rigs, race cars, ATVs, and motorcycles.

Common measurements include:

- Suspension—strut pressure, spring force, travel, mounting point stress, deflection, ride
- Fuel system—line and tank pressure, flow, temperature, injection timing
- Comfort control—ambient and supply air temperature, solar radiation, fan speed, blower currents, ac on/off, refrigerant pressures, time-to-comfort
- Brakes—line pressure, pedal pressure and travel, ABS, fluid and pad temperature
- Engine—pressure, temperature, crank position, RPM, time-to-start, oil pump cavitation
- General vehicle—chassis monitoring, road noise, traction, payload, vehicle position/speed, steering, air bag, hot/cold soaks, wind tunnels, CANbus, wiper speed/current, vehicle electrical loads

### Other Applications

- HVAC Systems—measures inside and outside temperatures, flow rates, differential pressures, motor temperatures, and relative humidity.
- Mining—monitors mine ventilation, slope stability, convergence, and equipment performance.
- Process monitoring and control—provides on-line quality control while minimizing production downtime.
- Laboratory—can serve as a monitoring device to record parameters over time and can also be used to regulate and control test conditions.
- Aerospace/aviation—can endure the rigors of space travel and provide acceleration, structural, and equipment performance measurements.
- Utilities and energy—monitors conditions at power generation plants (hydroelectric, solar, and wind), terminals, substations, oil and gas pumping facilities, commercial and residential consumer sites, and along transmission lines.



The CR5000 can monitor and control pumps, fans, and starter motors in an HVAC system.



Wide operating temperature ranges, solar-, AC- or battery-powered operation, wireless communications, and reliable performance make our systems ideal for unattended monitoring.

# CR5000 Specifications

Electrical specifications are valid over a -25° to +50°C range unless otherwise specified; non-condensing environment required. To maintain electrical specifications, Campbell Scientific recommends recalibrating dataloggers every two years. We recommend that you confirm system configuration and critical specifications with Campbell Scientific before purchase.

## PROGRAM EXECUTION RATE

The CR5000 can measure one channel and store the result in 500  $\mu$ s; all 40 single-ended (SE) channels can be measured in 8 ms (5 kHz aggregate rate).

## ANALOG INPUTS

20 differential (DF) or 40 single-ended (SE) individually configured. Channel expansion provided by AM16/32B and AM25T multiplexers.

RANGES, RESOLUTION, AND TYPICAL INPUT NOISE: Basic Resolution (Basic Res) is the A/D resolution of a single conversion. Resolution of DF with input reversal is half the Basic Res. Noise values are for DF with input reversal; noise is greater with SE.

Input Rng (mV)	Basic Res ( $\mu$ V)	0 Int. ( $\mu$ V RMS)	250 $\mu$ s Int. ( $\mu$ V RMS)	20/16.7 ms Int. ( $\mu$ V RMS)
$\pm$ 5000	167	70	60	30
$\pm$ 1000	33.3	30	12	6
$\pm$ 200	6.67	8	2.4	1.2
$\pm$ 50	1.67	3.0	0.8	0.3
$\pm$ 20	0.67	1.8	0.5	0.2

### ACCURACY<sup>1</sup>:

- $\pm$ (0.05% of reading + offset), 0° to 40°C
- $\pm$ (0.075% of reading + offset), -25° to 50°C
- $\pm$ (0.10% of reading + offset), -40° to 85°C (-XT only)

<sup>1</sup>The sensor and measurement noise is not included and the offsets are the following:

Offset for DF w/input reversal = Basic Res + 1.0  $\mu$ V  
Offset for DF w/o input reversal = 2Basic Res + 2.0  $\mu$ V  
Offset for SE = 2Basic Res + 10  $\mu$ V

### MINIMUM TIME BETWEEN VOLTAGE MEASUREMENTS:

Zero Integration:	125 $\mu$ s
250 $\mu$ s Integration:	475 $\mu$ s
16.7 ms Integration:	19.9 ms
20 ms Integration:	23.2 ms

### INPUT LIMITS: $\pm$ 5 V

DC COMMON MODE REJECTION: >100 dB with input reversal (>80 dB without input reversal)

NORMAL MODE REJECTION: 70 dB @ 60 Hz when using 60 Hz rejection

SUSTAINED INPUT VOLTAGE W/O DAMAGE:  $\pm$ 16 Vdc

INPUT CURRENT:  $\pm$ 2 nA typ.,  $\pm$ 10 nA max. @ 50°C

INPUT RESISTANCE: 20 Gohms typical

ACCURACY OF BUILT-IN REFERENCE JUNCTION THERMISTOR (for thermocouple measurements):  
 $\pm$ 0.25°C, 0° to 40°C  
 $\pm$ 0.5°C, -25° to 50°C  
 $\pm$ 0.7°C, -40° to 85°C (-XT only)

## ANALOG OUTPUTS

4 switched voltage; 4 switched current; 2 continuous voltage; switched outputs active only during measurements, one at a time.

RANGE: Voltage outputs programmable between  $\pm$ 5 V; current outputs programmable between  $\pm$ 2.5 mA

RESOLUTION: 1.2 mV for voltage outputs; 0.6  $\mu$ A for current outputs

ACCURACY:  $\pm$ 10 mV for voltage outputs;  $\pm$ 10  $\mu$ A for current outputs

CURRENT SOURCING: 50 mA for switched voltage; 15 mA for continuous

CURRENT SINKING: 50 mA for switched voltage; 5 mA for continuous (15 mA w/selectable option)

COMPLIANCE VOLTAGE:  $\pm$ 5 V for switched current excitation

## RESISTANCE MEASUREMENTS

Provides voltage ratio measurements of 4- and 6-wire full bridges, and 2-, 3-, 4-wire half bridges. Direct resistance measurements available with current excitation. Dual-polarity excitation is recommended.

VOLTAGE RATIO ACCURACY<sup>2</sup>: Assumes input and excitation reversal and an excitation voltage of at least 2000 mV.

- $\pm$ (0.04% Reading + Basic Res/4) 0° to 40°C
- $\pm$ (0.05% Reading + Basic Res/4) -25° to 50°C
- $\pm$ (0.06% Reading + Basic Res/4) -40° to 85°C (-XT)

### ACCURACY<sup>2</sup> WITH CURRENT EXCITATION:

Assumes input and excitation reversal, and an excitation current,  $I_x$ , of at least 1 mA.

- $\pm$ (0.075% Reading + Basic Res/2 $I_x$ ) 0° to 40°C
- $\pm$ (0.10% Reading + Basic Res/2 $I_x$ ) -25° to 50°C
- $\pm$ (0.12% Reading + Basic Res/2 $I_x$ ) -40° to 85°C (-XT)

<sup>2</sup>The sensor and measurement noise is not included.

## PERIOD AVERAGING MEASUREMENTS

The average period for a single cycle is determined by measuring the duration of a specified number of cycles. Any of the 40 SE analog inputs can be used; signal attenuation and ac coupling may be required.

### INPUT FREQUENCY RANGE:

Input Range	Signal (peak to peak) Min. Max <sup>3</sup>	Min. Pulse W.	Max. Freq.
$\pm$ 5000	600 mV 10 V	2.5 $\mu$ s	200 kHz
$\pm$ 1000	100 mV 2.0 V	5.0 $\mu$ s	100 kHz
$\pm$ 200	4 mV 2.0 V	25 $\mu$ s	20 kHz

<sup>3</sup>Maximum signals must be centered around datalogger ground.

RESOLUTION: 70 ns/number of cycles measured

ACCURACY:  $\pm$ (0.03% of Reading + Resolution)

## PULSE COUNTERS

Two 16-bit inputs selectable for switch closure, high frequency pulse, or low-level ac.

MAXIMUM COUNT: 4 x 10<sup>9</sup>

### SWITCH CLOSURE MODE:

- Minimum Switch Closed Time: 5 ms
- Minimum Switch Open Time: 6 ms
- Max. Bounce Time: 1 ms open w/o being counted

### HIGH-FREQUENCY PULSE MODE:

- Maximum Input Frequency: 400 kHz
- Maximum Input Voltage:  $\pm$ 20 V
- Voltage Thresholds: Count upon transition from below 1.5 V to above 3.5 V at low frequencies. Larger input transitions are required at high frequencies because of 1.2  $\mu$ s time constant filter.

LOW-LEVEL AC MODE: Internal ac coupling removes dc offsets up to  $\pm$ 0.5 V.

- Input Hysteresis: 15 mV
- Maximum ac Input Voltage:  $\pm$ 20 V
- Minimum ac Input Voltage:

Sine wave (mV RMS)	Range (Hz)
20	1.0 to 1000
200	0.5 to 10,000
1000	0.3 to 16,000

## DIGITAL I/O PORTS

8 ports selectable as binary inputs or control outputs.

OUTPUT VOLTAGES (no load): high 5.0 V  $\pm$ 0.1 V; low < 0.1 V

OUTPUT RESISTANCE: 330 ohms

INPUT STATE: high 3.0 to 5.3 V; low -0.3 to 0.8 V

INPUT RESISTANCE: 100 kohms

## SWITCHED 12 V

Two independent 12 V unregulated sources switched on and off under program control. Thermal fuse hold current = 900 mA @ 20°C, 650 mA @ 50°C, 360 mA @ 85°C.

## EMI and ESD PROTECTION

The CR5000 is encased in metal and incorporates EMI filtering on all inputs and outputs. Gas discharge tubes provide robust ESD protection on all terminalblock inputs and outputs. The following European CE standards apply.

EMC tested and conforms to BS EN61326:1998.

Details of performance criteria applied are available upon request.

Warning: This is a Class A product. In a domestic environment this product may cause radio interference in which case the user may be required to correct the interference at the user's own expense.

## CPU AND INTERFACE

PROCESSOR: Hitachi SH7034

MEMORY: Battery-backed SRAM provides 2 Mbytes for data and operating system use with 128 kbytes reserved for program storage. Expanded data storage with PCMCIA type I, type II, or type III card, or CF card (requires an adapter).

DISPLAY: 8-line-by-21 character alphanumeric or 128 x 64 pixel graphic LCD display w/backlight.

SERIAL INTERFACES: Optically isolated RS-232 9-pin DCE port for computer or non-CSI modem connection. CS I/O 9-pin port for Campbell Scientific peripherals.

BAUD RATES: Selectable from 1,200 to 115,200 bps. ASCII protocol is eight data bits, one start bit, one stop bit, no parity.

CLOCK ACCURACY:  $\pm$ 1 minute per month, -25° to +50°C;  $\pm$ 2 minute per month, -40° to +85°C

## SYSTEM POWER REQUIREMENTS

VOLTAGE: 11 to 16 Vdc

TYPICAL CURRENT DRAIN: 400  $\mu$ A software power off; 1.5 mA sleep mode; 4.5 mA at 1 Hz (200 mA at 5 kHz) sample rate.

INTERNAL BATTERIES: 7 Ahr rechargeable base (optional); 1650 mAhr lithium battery for clock and SRAM backup, 10 years of service typical, less at high temperatures.

EXTERNAL BATTERIES: 11 to 16 Vdc; reverse polarity protected.

## PHYSICAL SPECIFICATIONS

SIZE: 9.8" x 8.3" x 4.5" (24.7 cm x 21.0 cm x 11.4 cm) Terminal strips extend 0.4" (1.0 cm).

WEIGHT: 4.5 lbs (2.0 kg) with low-profile base; 12.2 lbs (5.5 kg) with rechargeable base

## WARRANTY

3 years against defects in materials and workmanship.

