

INSTRUCTION MANUAL



44212 **Temperature Probe**

July 2011



*Copyright © 2010
Campbell Scientific (Canada) Corp.*

WARRANTY AND ASSISTANCE

This equipment is warranted by CAMPBELL SCIENTIFIC (CANADA) CORP. ("CSC") to be free from defects in materials and workmanship under normal use and service for **twelve (12) months** from date of shipment unless specified otherwise. **** **Batteries are not warranted.** **** CSC's obligation under this warranty is limited to repairing or replacing (at CSC's option) defective products. The customer shall assume all costs of removing, reinstalling, and shipping defective products to CSC. CSC will return such products by surface carrier prepaid. This warranty shall not apply to any CSC products which have been subjected to modification, misuse, neglect, accidents of nature, or shipping damage. This warranty is in lieu of all other warranties, expressed or implied, including warranties of merchantability or fitness for a particular purpose. CSC is not liable for special, indirect, incidental, or consequential damages.

Products may not be returned without prior authorization. To obtain a Return Merchandise Authorization (RMA), contact CAMPBELL SCIENTIFIC (CANADA) CORP., at (780) 454-2505. An RMA number will be issued in order to facilitate Repair Personnel in identifying an instrument upon arrival. Please write this number clearly on the outside of the shipping container. Include description of symptoms and all pertinent details.

CAMPBELL SCIENTIFIC (CANADA) CORP. does not accept collect calls.

Non-warranty products returned for repair should be accompanied by a purchase order to cover repair costs.



CAMPBELL SCIENTIFIC
C A N A D A C O R P .

11564 - 149 street - edmonton - alberta - T5M 1W7
tel 780.454.2505 fax 780.454.2655

www.campbellsci.ca

Models 44212 and 44212EC Temperature Probes

1. Introduction

The Model 44212 (Air/Soil/Water) and 44212EC (Air) Temperature probes use thermistors to measure temperature. The probes contain a YSI 44212 thermilinear network.

The 44212 and 44212EC probes are designed to be housed in the 41303 six-plate Gill radiation shield or equivalent. The radiation shield is used to mount the 44212 and 44212EC probe and limit solar radiation loading. The 44212 temperature probe can be buried or submerged in water up to 50 feet (21psi).

A ten foot lead length is standard. Custom lead lengths are available up to 1000 feet. Do not extend the lead lengths by adding wire to the pigtail connection end, as measurement errors will result.

Any information specific to the 44212EC can be found in Appendix B.

2. Accuracy - Temperature Sensor

Refer to Appendix A for specifications of the YSI 44212 thermilinear network. Model 44212EC comes with a calibration record.

3. Installation and Wiring

The 44212 & 44212EC must be housed inside a radiation shield when used in the field for air temperature measurements. The 41303 radiation shield (see Figure 3-1) mounts to a CM6 or CM10 tripod. The CM200 series crossarms can be used to mount a 41303 with 44212 to a UT10, or UT30 tower (not shown).

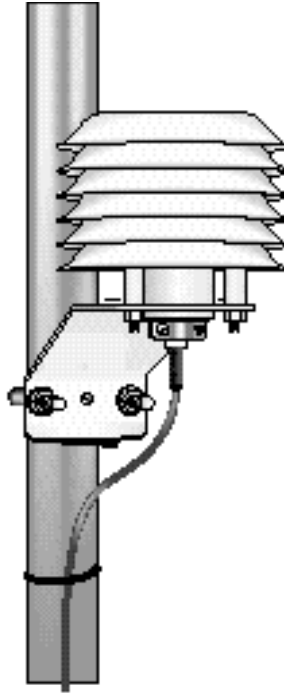


Figure 3-1. 44212/44212EC and 41303 Radiation Shield on a CM6/CM10 Tripod Mast

A cross section view of an on-site installed 44212 is shown in Figure 3-2. Water migrating down the cable may cause pooling around the sensor or erosion of the soil/sensor interface that will influence the temperature measurement. These effects can be minimized or removed by installing the sensing tip of the probe horizontally into the soil with a dew loop in the cable (see Figure 3-2).

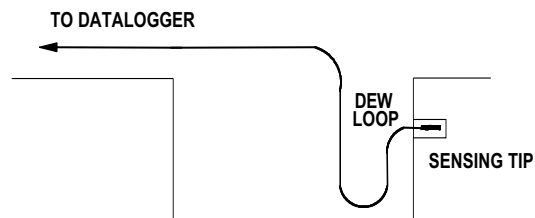


Figure 3-2. Installation of the 44212

Connections to the datalogger for the 44212 are shown in Figure 3-3. The probe requires one single ended analog input channel. The yellow signal lead can be inserted into any available single ended analog terminal. Please see Appendix B for wiring of the 44212EC.



Figure 3-3. 44212 Probe

44212 Datalogger Connections			
Description	Colour	CR23X/CR1000	CR10(X), CR510
Temperature	Yellow	Single-Ended Input	Single-Ended Input
Signal Reference	Purple	⏏	AG
Excitation	Black	Excitation Input	Excitation Input
Shield	Clear	⏏	AG

Table 3-1. 44212 Datalogger Connections
(See Appendix B for 44212EC connections)

The black thermistor excitation lead connects to any available excitation channel. The number of probes per excitation channel is physically limited by the number of lead wires that can be inserted into a single excitation terminal (approximately ten).

4. Programming

EXAMPLE 1. CR1000 example for 44212 and 44212EC Probes

This section is for users who write their own datalogger programs. The 44212 temperature signal is measured using a single-ended analog channel. The thermistor portion of the probe has a linear millivolt output over the -50 to +50 Celsius range. A multiplier of 178.75 and an offset of -72.789 provides output of temperature in Celsius.

5. Maintenance

The 44212 and 44212EC probes require minimal maintenance. Check to make sure the radiation shield is free from debris. For most applications it is unnecessary to calibrate either of the probes to eliminate the thermistor offset. However, for those users that are interested, the following briefly describes the procedure.

A single point calibration can be performed to determine the temperature offset (thermistor interchangeability). For example, the probe is placed in a calibration chamber that is at 0°C and the probe outputs 0.05°C. The offset would be -0.05 °C. This offset can be entered into datalogger measurement instruction.

Appendix A. Specifications

YSI Thermilinear Network Specifications

44212	Linear Range	Linearity Deviation
	-50 to +50°C	±0.09°C

YSI Components Used in 44212 Network

44020 Thermistor	Maximum Operating Temperature	Accuracy and Interchangeability
$T_1=2,000 \Omega @ 25^\circ\text{C}$	55°C (131°F)	±0.1°C

$T_2=15,000 \Omega @ 25^\circ\text{C}$

$T_3=45,000 \Omega @ 25^\circ\text{C}$

44312 Resistor Set	Resistor Error
$R_1 = 23,100 \Omega$	±0.15°C @ -50°C, ±0.03°C @ +50°C

$R_2 = 88,200 \Omega$

$R_3 = 38,000 \Omega$

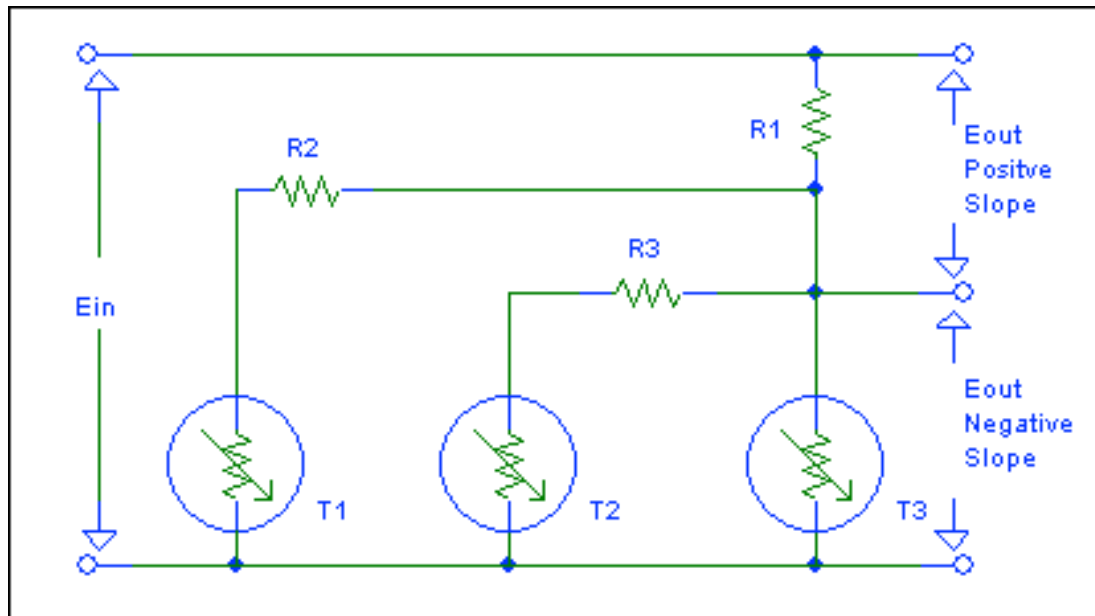


Figure A-1. YSI 44212 Thermilinear Network

Appendix B. 44212EC Wiring Diagram

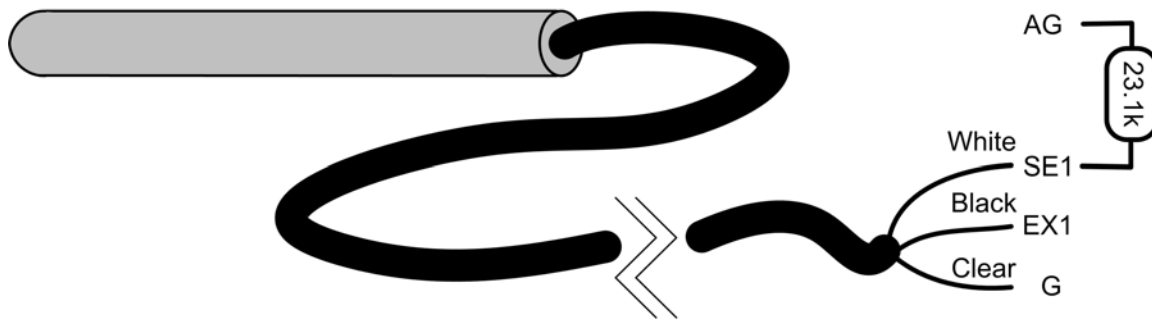


Figure B-1. 44212EC Wiring Diagram

