



May 2010

Introducing USB interface with Data Memory Capability

Campbell Scientific's [SC115](#) is an innovative, lightweight, portable instrument that can serve as a 2-GB storage device or as a USB-to-CS I/O synchronous device communications (SDC) adapter.

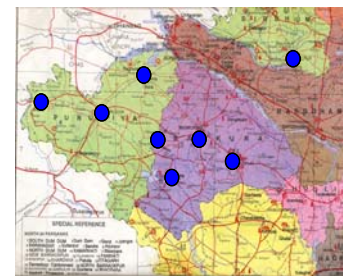
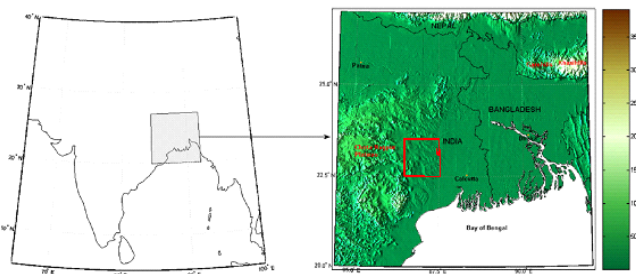
This device allows you to augment your onsite data storage or to transport data between the datalogger and PC.

The SC115 can be used with most Campbell Scientific dataloggers and is the only storage device that is compatible with the [CR800](#) and [CR850](#).



Jadavpur University Studies Nor'wester

Since February, 2008, a meso-network of eight 10-meter automatic weather stations powered by the [CR1000](#) datalogger has been made operational in the semi-arid region of Gangetic West Bengal, as a part of a nationally coordinated research project STORM (Severe Thunderstorms - Observations and Regional Modeling). Dr. Debasish Lohar along with his research students Shubho Dalal and Sumana Sarkar of Jadavpur University are studying the structure and development processes of one of the severest thunderstorms, locally known as 'Nor'wester' which usually occur in the premonsoon season, i.e., from March through May.



Measurements include air pressure, wind, rainfall, solar radiation, air temperature, relative humidity, two levels of soil temperature and soil moisture. Data is collected via GSM modem and the entire project was installed and commissioned by Elcome Technologies Pvt. Ltd. During 2008 and 2009 several atmospheric events in connection with severe thunderstorms were identified of which 'wake low' was identified whereby an extreme air pressure drop of up to 23 mb occurred within 10 -15 minutes. Several cases were detected for such event because of the spatial resolution of the stations (as shown in the figure), higher sampling resolution and accuracy of the equipments. With further study, Dr. Lohar's team hopes to gain more understanding into these phenomena which will in turn help in predicting these storms. For further information about this project, please contact Dr. Debasish Lohar at dlohar_atmos@yahoo.com (+91-9748513630) or Mr. Shubho Dalal at shubhodlal@gmail.com (+91-9836799818).

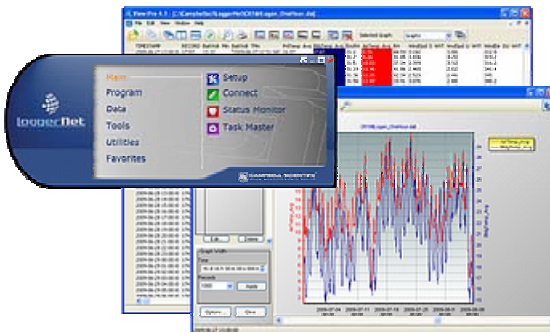
For more information on how to reach Campbell Scientific in India, please visit the "[Contact Us](#)" section of our website

Introducing LoggerNet 4

We're excited to announce the release of [LoggerNet 4](#), a major upgrade to our main datalogger support software package. In addition to a redesigned user interface, we've added many functional changes to improve and expand the tools available for working with our dataloggers. Many of these improvements were recommended by you, our customers.

LoggerNet 4 retains the solid client/server architecture used by previous versions, with the server communicating with the datalogger network and simultaneously serving data to multiple client applications.

LoggerNet 4 is the first LoggerNet version to include a 30-day trial, which is available for download [from our website](#) free of charge. This is a fully functional version of the software that runs for 30 days.



Campbell Corner – Tip Accurate equipment makes for quality research data

Accuracy and Resolution Data logger specifications (Ex: [CR1000](#)) will often state accuracy and resolution but what does this mean? Accuracy is the degree of closeness a measurement of a signal is to its true value. Resolution is the ability to discern small changes in the signal. Which is more important?

Consider a photographer taking pictures of a tiger from a great distance using a camera with a zoom lens. The stronger the lens, the better the resolution but, if the camera is not on target (accuracy) the tiger will not be in the picture and the high resolution is pointless. In the same way a data measurement taken with high resolution and low accuracy will result in a potentially poor measurement. Although resolution is important, it's not as important as accuracy. That is why Campbell Scientific specifications state both parameters.

For details on our data logger specifications and how that affects your project please contact [Elcome Technologies Pvt. Ltd](#) .

With accurate measurements comes quality research data.



Watch for our next issue to be released in September 2010

A-6, Infocity, Sector 34 Gurgaon – 122002 +91 (124) 4122222
www.campbellsci.ca/Index_India.html