

# INSTRUCTION MANUAL



## SC532A 9-Pin Peripheral to RS232 Interface

Revision: 4/09



Copyright © 1998-2009  
Campbell Scientific, Inc.

# ***PLEASE READ FIRST***

## **About this manual**

Please note that this manual was originally produced by Campbell Scientific Inc. (CSI) primarily for the US market. Some spellings, weights and measures may reflect this origin.

Some useful conversion factors:

**Area:** 1 in<sup>2</sup> (square inch) = 645 mm<sup>2</sup>

**Length:** 1 in. (inch) = 25.4 mm  
1 ft (foot) = 304.8 mm  
1 yard = 0.914 m  
1 mile = 1.609 km

**Mass:** 1 oz. (ounce) = 28.35 g  
1 lb (pound weight) = 0.454 kg

**Pressure:** 1 psi (lb/in<sup>2</sup>) = 68.95 mb

**Volume:** 1 US gallon = 3.785 litres

In addition, part ordering numbers may vary. For example, the CABLE5CBL is a CSI part number and known as a FIN5COND at Campbell Scientific Canada (CSC). CSC Technical Support will be pleased to assist with any questions.

## WARRANTY AND ASSISTANCE

This equipment is warranted by CAMPBELL SCIENTIFIC (CANADA) CORP. ("CSC") to be free from defects in materials and workmanship under normal use and service for **twelve (12) months** from date of shipment unless specified otherwise. \*\*\*\*\* **Batteries are not warranted.** \*\*\*\*\* CSC's obligation under this warranty is limited to repairing or replacing (at CSC's option) defective products. The customer shall assume all costs of removing, reinstalling, and shipping defective products to CSC. CSC will return such products by surface carrier prepaid. This warranty shall not apply to any CSC products which have been subjected to modification, misuse, neglect, accidents of nature, or shipping damage. This warranty is in lieu of all other warranties, expressed or implied, including warranties of merchantability or fitness for a particular purpose. CSC is not liable for special, indirect, incidental, or consequential damages.

Products may not be returned without prior authorization. To obtain a Return Merchandise Authorization (RMA), contact CAMPBELL SCIENTIFIC (CANADA) CORP., at (780) 454-2505. An RMA number will be issued in order to facilitate Repair Personnel in identifying an instrument upon arrival. Please write this number clearly on the outside of the shipping container. Include description of symptoms and all pertinent details.

CAMPBELL SCIENTIFIC (CANADA) CORP. does not accept collect calls.

Non-warranty products returned for repair should be accompanied by a purchase order to cover repair costs.



**CAMPBELL SCIENTIFIC**  
C A N A D A C O R P .

11564 - 149 street - edmonton - alberta - T5M 1W7  
tel 780.454.2505 fax 780.454.2655

[www.campbellsci.ca](http://www.campbellsci.ca)

# SC532A Table of Contents

---

*PDF viewers note: These page numbers refer to the printed version of this document. Use the Adobe Acrobat® bookmarks tab for links to specific sections.*

<b>1. Function</b> .....	1
<b>2. Physical Description</b> .....	1
<b>3. Specifications</b> .....	2
<b>4. Hardware Connections</b> .....	3
<b>5. Operation</b> .....	3
<b>6. Portable Battery Power</b> .....	4

## ***Appendices***

<b>A. Pin Description</b> .....	A-1
<b>B. Schematic</b> .....	B-1
<b>C. Component Location</b> .....	C-1

## ***Figures***

1. SC532A Case Top .....	1
2. Connection Block Diagram.....	3
3. DC Cable for 12 VDC Datalogger Connection.....	3

## ***Tables***

1. SC532A Power Supply Connector.....	5
2. CSI Peripherals and Their Maximum Operating Current Requirements ....	5
3. SC532A Jumper Guide .....	5
A-1. SC532A Pin Description.....	A-1
A-2. DTE 25 Pin Configuration.....	A-2
A-3. DTE 9 Pin Configuration.....	A-2



# SC532A 9-Pin Peripheral to 9-Pin RS232 Interface

---

## 1. Function

The SC532A Peripheral Interface connects an IBM® PC compatible computer, with appropriate software, to certain Campbell Scientific datalogger peripherals including phone modems (COM200, COM210, COM220), storage modules (SM4M/16M, SM192/716), MD9 multi-drop interface, and Seimac SCD/Argos satellite transmitter.

Like the SC532, the SC532A supplies 5 VDC on the PERIPHERAL connector (pin 1) to power 5V peripherals like the SM16M. The SC532A also supplies 12 VDC (on pin 8) to power 12V peripherals such as the COM220, high-speed modems, and certain radios.

The SC532A has an internal jumper that selects either “SC532” or “PROG” mode. PROGRAM mode is for configuring the Seimac SCD/Argos satellite transmitter. The factory setting is “SC532” which is appropriate for most applications. The case can be opened by twisting a 1/8 inch (3 mm) standard screwdriver in the four seam slots.

## 2. Physical Description

An SC12 and a 10873 cable are shipped with the SC532A. The SC12 cable connects the SC532A 9-pin female D-Sub labeled “PERIPHERAL” to your CSI peripheral. The 10873 cable connects a PC COM port to the other 9-pin connector labeled “PC.”

The SC532A is typically powered by the 15966 wall charger (purchased separately). This wall charger supplies 12VDC @ 800 mA which is sufficient for any listed peripheral. The power jack on the SC532A allows convenient wall charger replacement. If only 5V peripherals are used, an AC adapter outputting just 6 VDC with enough current capability and having the correct barrel connector size and polarity will do (see Tables 1 and 2).

The 14020 and 14291 field cables are available (see Portable Battery Power section) for remote sites lacking 120 VAC. The 14020 and 14291 field cables are purchased separately.



FIGURE 1. SC532A Case Top

### 3. Specifications

Input voltage (to POWER jack)	A) 5 Volt Peripherals require 6 – 17 VDC B) 12 Volt Peripherals require 12 – 17 VDC Barrel connector: inner bore (+), outer sleeve (-) (factory 120 V AC adapter supplies 12 VDC unregulated @ 1A)
Output voltages	+5 VDC $\pm$ 0.075 VDC on PERIPHERAL connector pin 1 and 6 – 17 VDC on PERIPHERAL connector pin 8, depending on AC adapter in use (12 VDC unregulated with factory AC adapter)
Current available to 5 V peripheral	+5 VDC @ 120 mA maximum at 25°C derate 12 mA for each AC adapter Volt above 9 VDC derate 1 mA for each °C above 25°C
Current available to 12 V peripheral	Factory provided AC adapter supplies unregulated 12 VDC @ 1 Amp
RS232 output levels	+10 VDC $\pm$ 1 VDC -10 VDC $\pm$ 1 VDC Maximum output impedance = 1100 $\Omega$
RS232 input levels	$\pm$ 30 V maximum Low threshold $\leq$ 0.8 V High threshold $\geq$ 3.5 V Input impedance at least 3000 $\Omega$
9-pin inputs	Low $\leq$ 1 V; High $\geq$ 3.5 V
9-pin outputs	Low $\leq$ 0.5 V; High $\geq$ 3.5 V
Current drain	5 mA typical quiescent 10 mA maximum quiescent
Port Configuration	PC: 9-pin D-Subminiature Female configured as DCE. Peripheral: 9-pin D-Subminiature Female connects to peripheral through SC12 Two Peripheral Connector Cable supplied with the SC532A.
Dimensions	4 5/8 x 1 3/4 x 1 inches (allow up to 1 1/4 inches extra on 1 3/4 dimension for power connector strain relief)
Weight	1 1/4 pounds with AC adapter

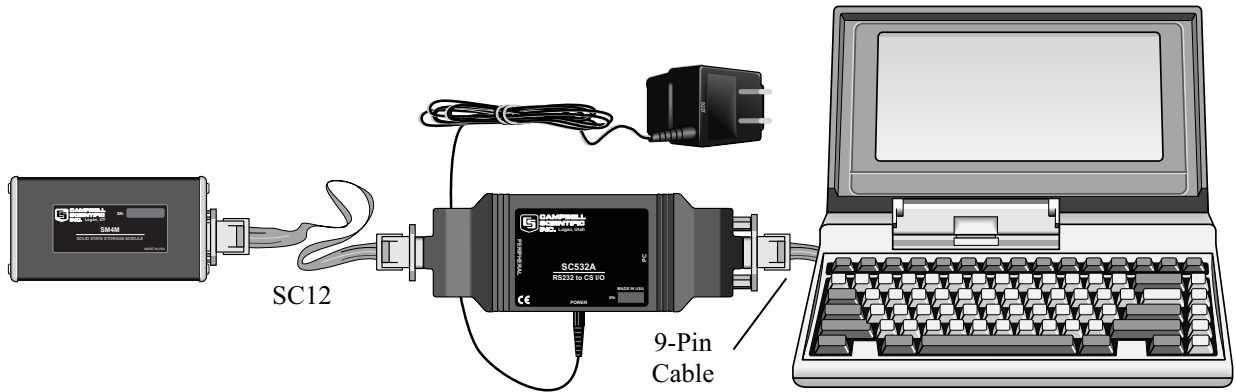


FIGURE 2. Connection Block Diagram (9-pin cable, side power jack)

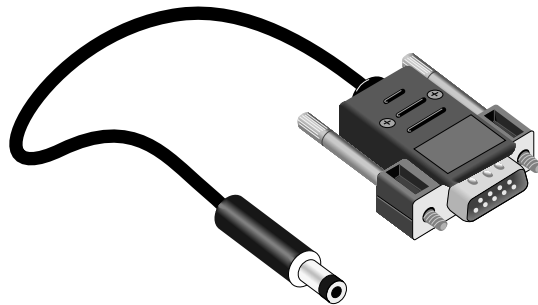


FIGURE 3. DC Cable for 12 VDC Datalogger Connection

## 4. Hardware Connections

Figure 2 shows the connection from a Campbell Scientific peripheral to a PC's 9-pin RS232 COM port via SC532A and data cables.

## 5. Operation

A CSI peripheral's logic levels (0V low, 5V high) are converted to RS232 levels (-10V and +10V respectively) by the SC532A.

The SC532A supplies regulated 5 VDC and unregulated 12 VDC power for peripherals. An AC adapter that plugs into a 120 VAC wall outlet is available as a common accessory.

You will need to write your own software if you are not using PC208 or PC208W Datalogger Support Software. Read the specific peripheral manual for the necessary control sequence.

Appendix A contains the SC532A and the DTE computer pin descriptions.

## 6. Portable Battery Power

The 14020 and 14291 field cables are available for remote sites lacking 120 VAC. The 14020 field cable is equipped with a DB9 for connection to the datalogger's CS I/O port.

The 14291 cable terminates in two wires for attachment to the 12 V and power ground terminals of the datalogger or 12 Vdc power supply. For earlier dataloggers lacking 12 V on CS I/O port (check voltage between pin 8 and power ground), the 14291 field cable needs to be used.

If using the 14291 cable, connect RED wire to the "12 V" terminal and BLACK wire to power ground terminal. The correct barrel connector polarity is (+) on the inner bore and (-) on the outer sleeve. If using a separate 12 Vdc power supply, a common ground must be shared with the datalogger's power source.

See Table 2 for the maximum operating currents required for selected CSI peripherals.

---

### CAUTION

Before plugging power connector into SC532A, if you have 1) the 14291 field cable, 2) replaced the factory AC adapter, or 3) built your own dc power cable, make sure that the voltage polarity is correct on the coaxial (barrel) connector. Application of REVERSED POLARITY power to the SC532A can damage the SC532A, datalogger, and peripheral (not covered under warranty)!

Barrel connector inner bore (+)

Barrel connector outer sleeve (-)

The maximum POWER input voltage is 17 VDC!

---

**TABLE 1. SC532A Power Supply Connector**

Barrel Connector Polarity and Size

Inner Conductor (bore) (+) 6 to 17 VDC (see Section 2)  
 Outer Conductor (sleeve) (-) GND

O.D is 5.5mm (0.216 in.)  
 I.D. is 2.5mm (0.098 in.)  
 Sleeve length = 11.5mm (0.453 in.) or more

**TABLE 2. CSI Peripherals and Their Maximum Operating Current Requirements**

<u>5 VDC Peripherals</u>	<u>Maximum Current</u>
MD9 Multidrop Interface	< 90 mA
SM4M/16M Storage Module	< 100 mA
SM192/716 Storage Module	< 20 mA
SM64 Storage Module	< 30 mA
CSM1 Card Storage Module	< 18 mA

<u>12 VDC Peripherals</u>	<u>Maximum Current</u>
COM220 Modem	< 30 mA
COM210 Modem	< 160 mA
COM200 Modem	< 140 mA
COM310 Voice Modem	< 160 mA
COM300 Voice Modem	< 180 mA
Seimac Argos SDC Transmitter	< 700 mA

**TABLE 3. SC532A Jumper Guide**

P4 Jumper

- A. **SC532** mode (factory default)
- B. **PROG**ram Seimac SCD/Argos satellite transmitter



# Appendix A. Pin Description

The SC532A 9-pin female port is configured as Data Communications Equipment (DCE) for direct cable connection to Data Terminal Equipment (DTE) such as an IBM-PC serial port.

The pin descriptions of the SC532A PC and PERIPHERAL connectors are listed in the following table.

**TABLE A-1. SC532A Pin Descriptions**

PIN = Pin number  
I = Signal Into the SC532A  
O = Signal Out of the SC532A

**PC CONNECTOR**  
9-PIN D-SUB FEMALE

<u>PIN</u>	<u>I/O</u>	<u>DESCRIPTION</u>
1	I	not used
2	O	RX
3	I	TX
4		DTR
5		GND
6		not used
7	I	RTS
8	O	not used
9	I	RING

**PERIPHERAL CONNECTOR**  
9-PIN D-SUB FEMALE

<u>PIN</u>	<u>I/O</u>	<u>DESCRIPTION</u>
1	O	+5V SUPPLY
2		GND
3	I	RING
4	I	RX
5	O	ME
6	O	SDE EN
7	O	CLK/HS
8	O	+12V
9	O	TX

A PC configured as DTE, such as the IBM-PC, adheres to the description in Table A-2 or A-3

**TABLE A-2. DTE 25 Pin Configuration**

PIN= 25-pin number  
 ABR = Abbreviation for the function name  
 I = Signal Into the computer  
 O = Signal Out of the computer

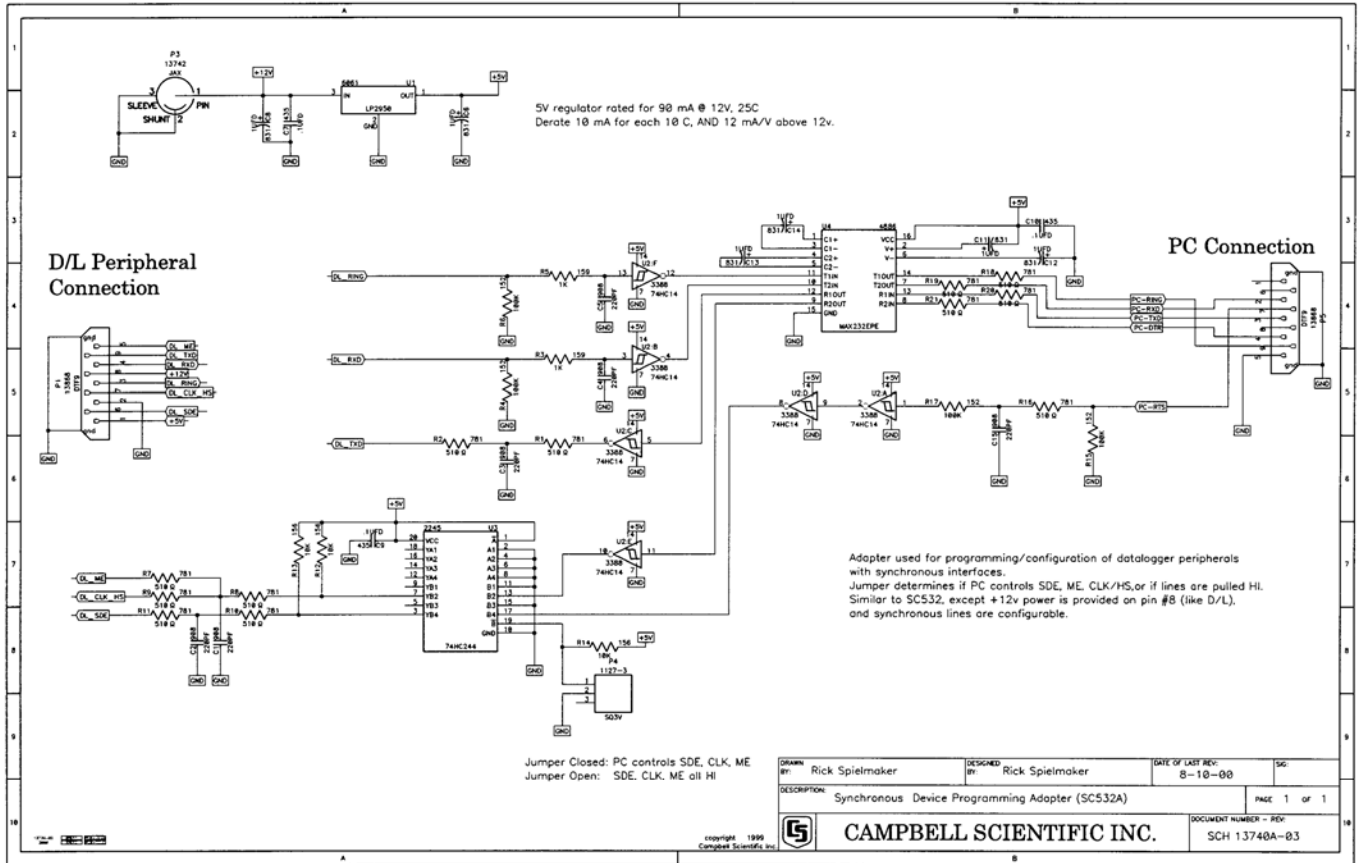
PIN	ABR	I/O	Function
1			Frame Ground.
2	TX	O	Transmit Data: Characters are transmitted from the computer on this line.
3	RX	I	Receive Data: Characters transmitted by a peripheral are received on this line.
4	RTS	O	Request To Send: The computer uses this line to control the peripheral's PE lines.
20	DTR	O	Data Terminal Ready: The computer uses this line to control the peripheral's ME and CLK/HS line.
22	RING	I	Ring Indicator: Raised to get the attention of the computer.
7	SG		Signal Ground: Voltages are measured relative to this point.

**TABLE A-3. DTE 9 Pin Configuration**

PIN = 9-pin number  
 ABR = Abbreviation for the function name  
 I = Signal Into the computer  
 O = Signal Out of the computer

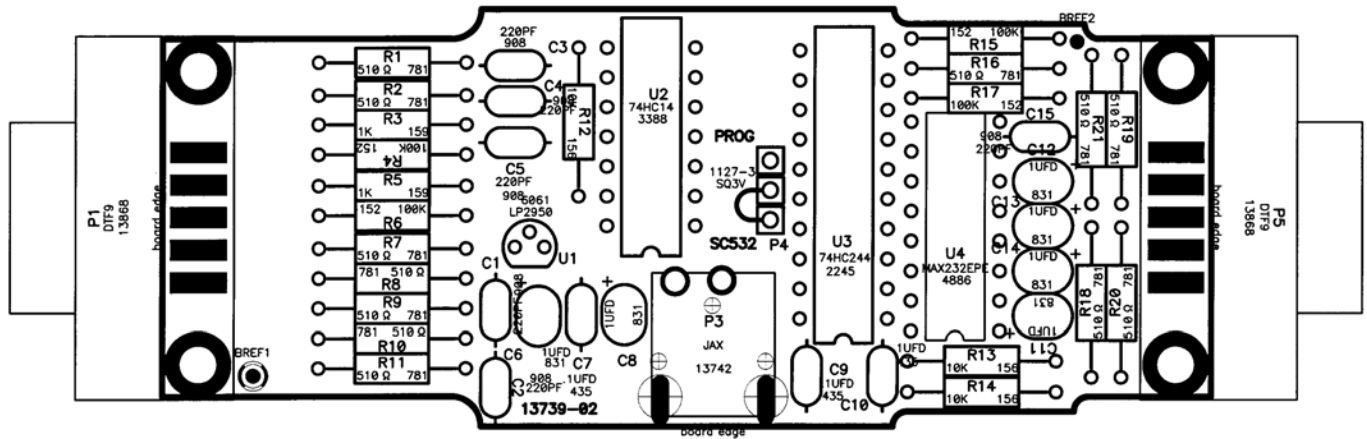
PIN	ABR	I/O	Function
1	CD	I	Carrier Detect
2	RX	I	Receive Data
3	TX	O	Transmit Data
4	DTR	O	Data Terminal Ready
5	SG		Signal Ground
6	DSR	I	Data Set Ready
7	RTS	O	Request to Send
8	CTS	I	Clear to Send
9	RING	I	Ring Indicator


# Appendix B. Schematic





# Appendix C. Component Location



	DESIGNED By: Craig Dahl	PROJECT MANAGER: Rick Spielmaker	DATE OF LAST REV: 08-10-00
	DESCRIPTION: ASY PCS SM532A		SIG:
<b>CAMPBELL SCIENTIFIC INC</b> <small>copyright 1999</small>		DOCUMENT NUMBER - REV: ADR 13740A-03	





## **Campbell Scientific Companies**

---

### **Campbell Scientific, Inc. (CSI)**

815 West 1800 North  
Logan, Utah 84321  
UNITED STATES  
www.campbellsci.com • info@campbellsci.com

### **Campbell Scientific Africa Pty. Ltd. (CSAf)**

PO Box 2450  
Somerset West 7129  
SOUTH AFRICA  
www.csafrica.co.za • cleroux@csafrica.co.za

### **Campbell Scientific Australia Pty. Ltd. (CSA)**

PO Box 444  
Thuringowa Central  
QLD 4812 AUSTRALIA  
www.campbellsci.com.au • info@campbellsci.com.au

### **Campbell Scientific do Brazil Ltda. (CSB)**

Rua Luisa Crapsi Orsi, 15 Butantã  
CEP: 005543-000 São Paulo SP BRAZIL  
www.campbellsci.com.br • suporte@campbellsci.com.br

### **Campbell Scientific Canada Corp. (CSC)**

11564 - 149th Street NW  
Edmonton, Alberta T5M 1W7  
CANADA  
www.campbellsci.ca • dataloggers@campbellsci.ca

### **Campbell Scientific Centro Caribe S.A. (CSCC)**

300 N Cementerio, Edificio Breller  
Santo Domingo, Heredia 40305  
COSTA RICA  
www.campbellsci.cc • info@campbellsci.cc

### **Campbell Scientific Ltd. (CSL)**

Campbell Park  
80 Hathern Road  
Shepshed, Loughborough LE12 9GX  
UNITED KINGDOM  
www.campbellsci.co.uk • sales@campbellsci.co.uk

### **Campbell Scientific Ltd. (France)**

Miniparc du Verger - Bat. H  
1, rue de Terre Neuve - Les Ulis  
91967 COURTABOEUF CEDEX  
FRANCE  
www.campbellsci.fr • info@campbellsci.fr

### **Campbell Scientific Spain, S. L.**

Psg. Font 14, local 8  
08013 Barcelona  
SPAIN  
www.campbellsci.es • info@campbellsci.es

*Please visit [www.campbellsci.com](http://www.campbellsci.com) to obtain contact information for your local US or International representative.*