

INSTRUCTION MANUAL



SC-USB USB to CS I/O Opto-Isolated Interface

Revision: 6/11



Copyright © 2004-2011
Campbell Scientific, Inc.

WARRANTY AND ASSISTANCE

This equipment is warranted by CAMPBELL SCIENTIFIC (CANADA) CORP. ("CSC") to be free from defects in materials and workmanship under normal use and service for **twelve (12) months** from date of shipment unless specified otherwise. **** **Batteries are not warranted.** **** CSC's obligation under this warranty is limited to repairing or replacing (at CSC's option) defective products. The customer shall assume all costs of removing, reinstalling, and shipping defective products to CSC. CSC will return such products by surface carrier prepaid. This warranty shall not apply to any CSC products which have been subjected to modification, misuse, neglect, accidents of nature, or shipping damage. This warranty is in lieu of all other warranties, expressed or implied, including warranties of merchantability or fitness for a particular purpose. CSC is not liable for special, indirect, incidental, or consequential damages.

Products may not be returned without prior authorization. To obtain a Return Merchandise Authorization (RMA), contact CAMPBELL SCIENTIFIC (CANADA) CORP., at (780) 454-2505. An RMA number will be issued in order to facilitate Repair Personnel in identifying an instrument upon arrival. Please write this number clearly on the outside of the shipping container. Include description of symptoms and all pertinent details.

CAMPBELL SCIENTIFIC (CANADA) CORP. does not accept collect calls.

Non-warranty products returned for repair should be accompanied by a purchase order to cover repair costs.



CAMPBELL SCIENTIFIC
C A N A D A C O R P .

11564 - 149 street - edmonton - alberta - T5M 1W7
tel 780.454.2505 fax 780.454.2655

www.campbellsci.ca

PLEASE READ FIRST

About this manual

Please note that this manual was originally produced by Campbell Scientific Inc. (CSI) primarily for the US market. Some spellings, weights and measures may reflect this origin.

Some useful conversion factors:

Area: 1 in² (square inch) = 645 mm²

Length: 1 in. (inch) = 25.4 mm
1 ft (foot) = 304.8 mm
1 yard = 0.914 m
1 mile = 1.609 km

Mass: 1 oz. (ounce) = 28.35 g
1 lb (pound weight) = 0.454 kg

Pressure: 1 psi (lb/in²) = 68.95 mb

Volume: 1 US gallon = 3.785 litres

In addition, part ordering numbers may vary. For example, the CABLE5CBL is a CSI part number and known as a FIN5COND at Campbell Scientific Canada (CSC). CSC Technical Support will be pleased to assist with any questions.

SC-USB Table of Contents

PDF viewers note: These page numbers refer to the printed version of this document. Use the Adobe Acrobat® bookmarks tab for links to specific sections.

1. Introduction	1
2. Technical Specifications	2
2.1 USB Specifications	2
2.2 CS I/O Port Specifications	2
2.3 General Specifications	3
2.4 Ships With	3
3. Using SC-USB Driver and Setup CD	3
3.1 Drivers Installation	3
3.1.1 Windows 2000/XP	4
3.1.2 Windows 98/98SE/ME	7
3.1.3 Uninstalling the SC-USB Drivers	9
3.1.4 Determining which COM Port the SC-USB has been Assigned	9
3.2 Set-up Modes – the SC_USB Programming Utility	11
3.2.1 Settings	11
3.2.1.1 Auto Detect (Automatic Baud Rate Detection)	11
3.2.1.2 Selecting a Fixed Baud Rate	12
3.2.1.3 Enable All Comms Modes (Automatic Mode Detection)	12
3.2.1.4 Enable CSDC Address 7 Mode	12
3.2.1.5 Enable CSDC Address 8 Mode	12
3.2.1.6 Enable SDC Comms Mode	12
3.2.1.7 Enable ME Comms Mode	13
3.2.1.8 Set ID	13
3.2.2 Operating System (OS) Downloads	13
4. Using the SC-USB with Campbell Software and Hardware	13
4.1 LoggerNet EZSetup or Standard Setup	13
4.2 Using the Device Configuration (DevConfig) Utility	13
4.2.1 Accessing DevConfig	13
4.2.2 Downloading a Datalogger OS	14
4.3 Use with the DSP4	14
5. Troubleshooting	14
5.1 Installation	14
5.2 Software Settings	14
5.3 Electronic Interference	15

Figure

1-1. Most of the components shipped with the SC-USB	2
---	---

SC-USB USB to CS I/O Opto-isolated Interface

The SC-USB is designed to allow Campbell Scientific dataloggers to communicate directly with computers fitted with a USB interface. It provides an isolated connection which can also operate at higher speeds than conventional RS-232 connections.

1. Introduction

The SC-USB is optically isolated thus preventing possible noise pickup associated with PC power supplies and ground connections. It also supports synchronous communications modes, available in some models of dataloggers, which allow multiple devices to be connected in parallel. The SC-USB can be used in place of an SC32B interface. The SC-USB also has the potential for high-speed data transfer to the PC at up to 1 MBit/second where the datalogger supports it.

Originally, the SC-USB was fitted with an integrated USB cable. At the end of 2009, the SC-USB was redesigned to include a connector instead of the integrated cable. A 17648 USB cable attaches to the new connector. This cable is shipped with the SC-USB.

The SC-USB will appear in PC software as a new virtual serial port, allowing it to be used with many software packages.

The SC-USB PC drivers support various operating systems including Windows 98/ME, 2000 and XP. The SC-USB is shipped with a software CD containing suitable drivers and a set-up/programming utility called Sc-USB.exe which can be found in a directory named 'Utility' on the CD. The CD also contains a comprehensive help file, and manual. These files can be accessed directly from the CD, if required, by double-clicking on the icon '**index**'.

The SC-USB will normally operate 'straight from the box' for most applications using the default settings. However, you can change the baud rate, the communication rate, and its USB ID by using the Sc-usb.exe set-up utility provided (see Section 3.2). This utility can also be used to upgrade the SC-USB's operating system.

Please check with Campbell Scientific if you wish to use the SC-USB with a CR9000X.

NOTE

If you are using a CR5000 datalogger, make sure the datalogger operating system is version 2.0 or later as this will enable the highest communication speeds. For older versions set the SC-USB to work in ME Comms Mode (see Section 3.2).



FIGURE 1-1. Most of the components shipped with the SC-USB. SC12 cable and ResourceCD not shown.

2. Technical Specifications

2.1 USB Specifications

- USB Version 1.1
- USB transfer rate up to 12 Mbits/second
- Active current consumption less than 85 mA (current drawn from PC)
- Standby current consumption less than 18 mA (current drawn from PC)
- 17648 Cable Description: 6 ft (1.8 m) length; USB Type A male to Type B male.

2.2 CS I/O Port Specifications

- Opto-isolated from the PC/USB to 47 V AC or DC. Note that this is *signal isolation only*, and does not provide safety isolation.
- Supports asynchronous communication from 9600 to 115200 baud and synchronous communication up to 1 MBit/second.
- Campbell Scientific protocols implemented: supports Modem-Enable (ME), Synchronous Device Communications protocol (SDC) and Concurrent-SDC (CSDC) modes. Some of these modes may require that the datalogger operating system be a specific version or higher. The SDC mode only works with operating systems created since October 2002 (CR10X 1.18 or higher, CR23X 1.15 or higher, etc.) The CSDC mode only works with a PakBus (PB) operating system and the CR5000.
- Dataloggers supported 21X, CR7X, CR500, CR510, CR10, CR10X / TD / PB, CR23X / TD / PB, CR800 series, CR1000, CR3000 and CR5000.

- PC software compatibility PC200W, PC400, LoggerNet, RTDAQ and most other packages that support virtual serial ports.
- Active current consumption less than 19 mA (current drawn from datalogger).
- Quiescent current consumption less than 80 μ A (current drawn from datalogger).

2.3 General Specifications

- Height: 0.8 in (2 cm)
Width: 1.6 in (4 cm)
Length: 3.0 in (7.5 cm)
- Weight: 3.0 oz
- Operating temperature range -25° to +50°C
- EMC compliance: complies with EN61326:1998 (see Section 5.3)
- Driver support for Windows 98 / ME / 2000 / XP supplied on CD (Contact Campbell Scientific for other drivers)

2.4 Ships With

- 17648 USB cable for connection to the PC's USB port.
- SC12 CS I/O cable for connection to the datalogger.
- Driver CD containing setup utility and manual.
- ResourceCD.

3. Using SC-USB Driver and Setup CD

3.1 Drivers Installation

The installation procedure is straightforward. The Windows set-up wizard will guide you through the installation steps as indicated below.

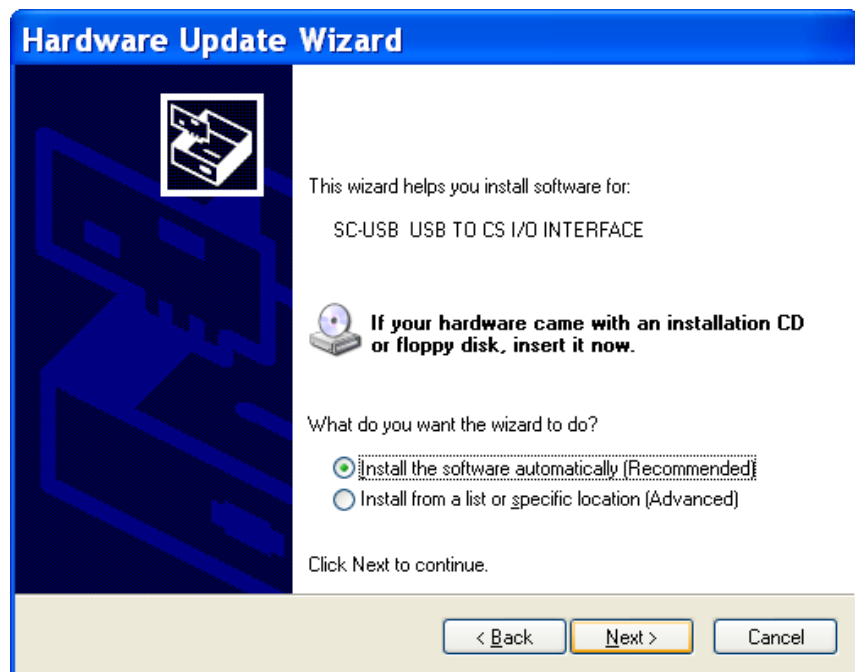
This guide assumes that you are installing the drivers onto a 'clean' system, i.e. one on which similar drivers have not been installed previously. If this is not the case, then you should first uninstall the existing drivers using the standard Windows procedure (see below). If upgrading your drivers from a previous version of SC-USB driver, it is also important to deinstall the previous drivers first to avoid conflicts.

3.1.1 Windows 2000/XP

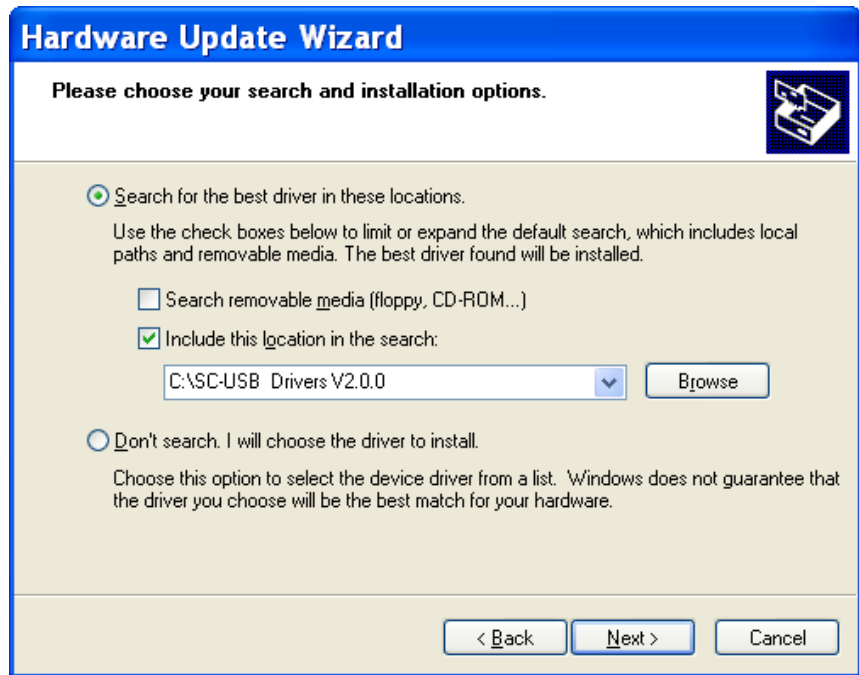
Use the USB cable to connect your SC-USB device to the PC's USB port. The first time that this is done, the 'Found New Hardware Wizard' screen will normally be displayed, as shown below for XP (Windows 2000 screens may not be identical to these).



Select 'No, not this time' and Press 'Next' and you will see the following screen.



If installing from CD, you can select the automatic option; if you are installing from another source, then you may need to select the second option and specify the root directory which contains the driver files, e.g.

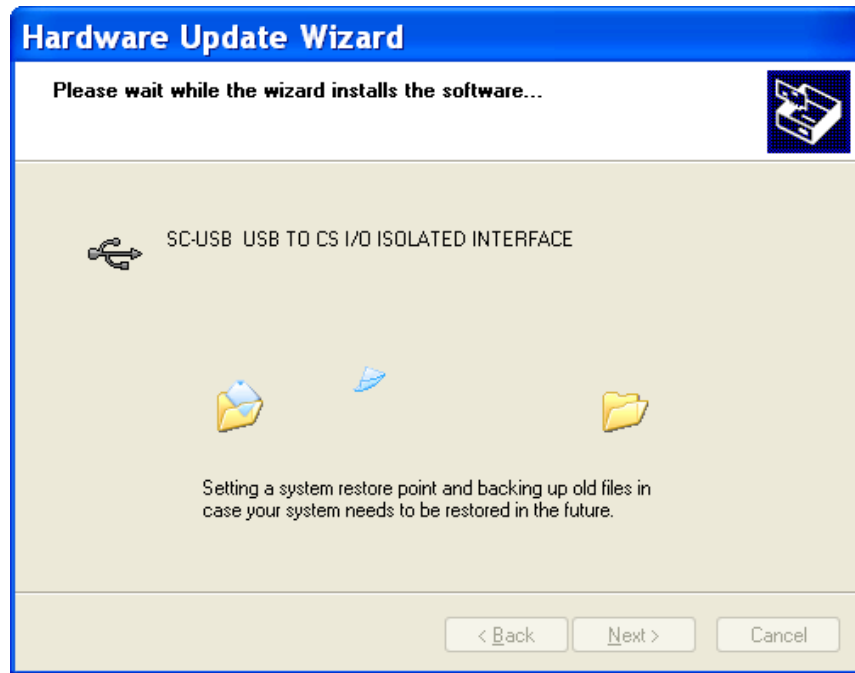


After selecting next the installation will pause with this message:

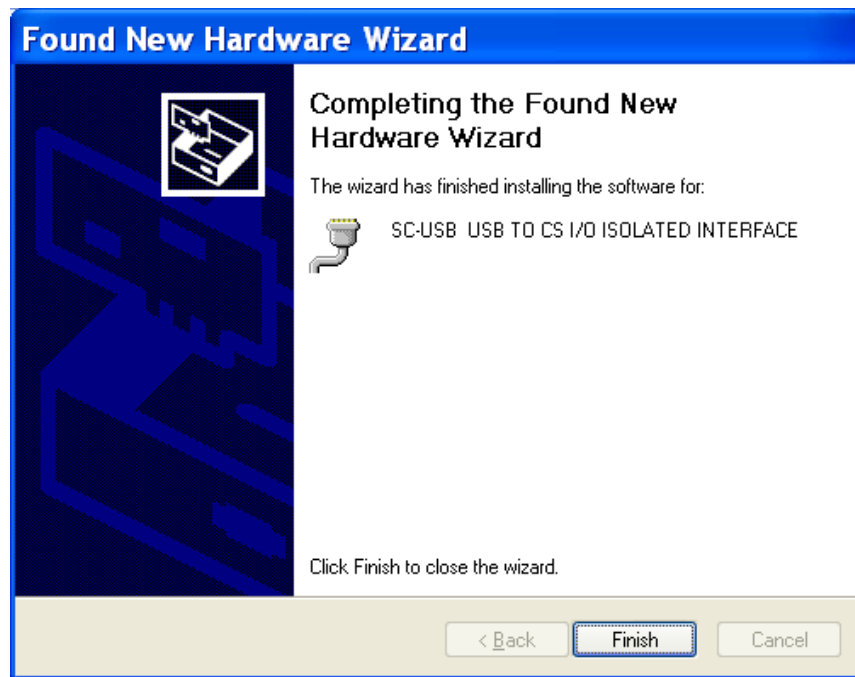


Select 'Continue Anyway' as the drivers are based upon Microsoft WHQL drivers from FTDI (www.ftdichip.com). Only company names and identifiers have been changed.

The Wizard will then continue through a number of steps, e.g.



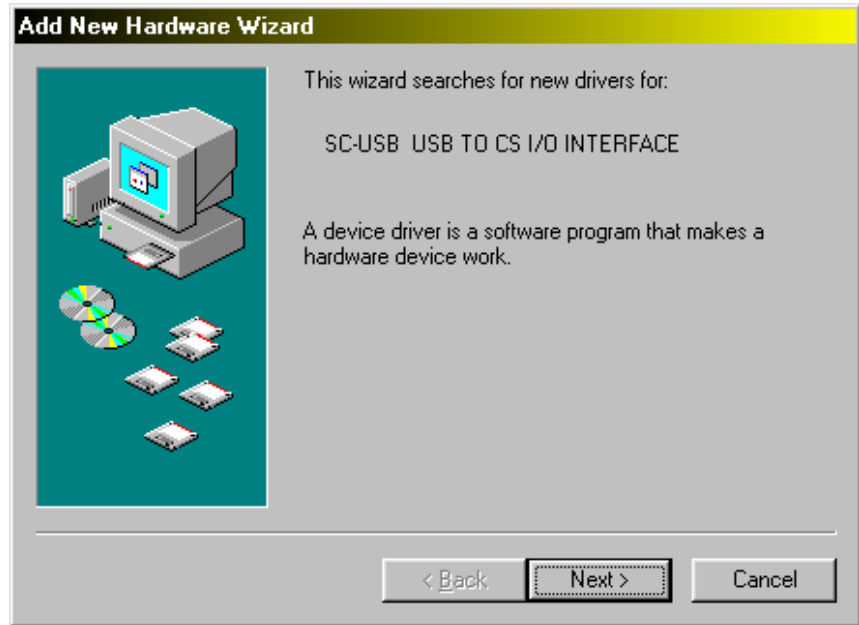
Rather than completing it will appear to restart the installation again as the 'Found New Hardware Wizard' appears again. This is not an error. Windows first installs the USB drivers and then the virtual serial port drivers. You need to follow the same steps as above again, until finally you get to this screen.



If you subsequently change the device ID (see Section 3.2), the PC may request the installation disk again as it will insist on re-installing the driver.

3.1.2 Windows 98/98SE/ME

Use the USB cable to connect your SC-USB device to the PC's USB port. The first time that this is done, the 'Building Driver Information Database' screen followed by the 'Add New Hardware Wizard' screen will normally be displayed, as shown below. (If it is not displayed immediately, try rebooting the PC with the SC-USB plugged in or run the Add New Hardware option in the Control Panel.)



Press 'Next' and you will see the following screen.



Select 'Search for the best driver....' and click 'Next'. You will then see the screen shown below.



Select the appropriate location; if using the supplied CD, the driver letter should be your CD-ROM drive. For Windows 98 or ME you must specify the subdirectory "win98me", as above, otherwise the installer will try to install the XP drivers from the default directory which will not work. Press 'Next' and, if the drivers were successfully found, a confirmation screen will be displayed, and the screen shown below will be displayed.



Press 'Next' and the drivers will be installed.

NOTE

In most cases the above process will be repeated as Windows first installs the USB interface controller and then the virtual serial port driver. Let Windows search for the serial driver in the same directory as the USB driver.

The installation process will only need to be carried out once.

3.1.3 Uninstalling the SC-USB Drivers

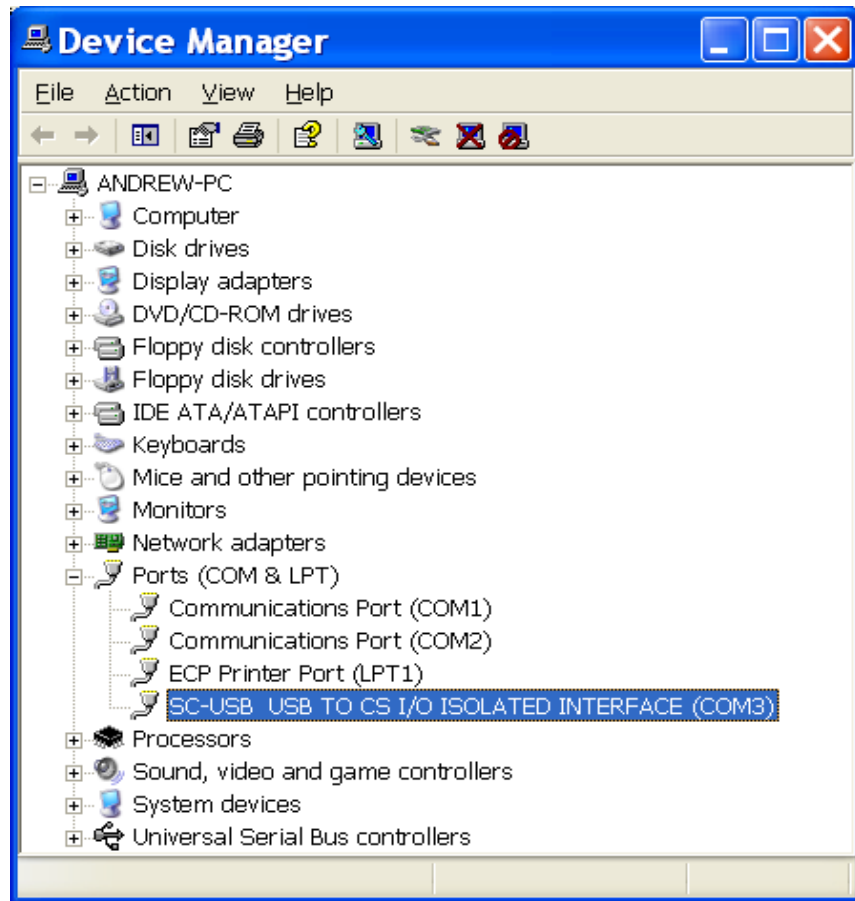
To uninstall the drivers use the standard Windows procedure. Go to the Windows 'Control Panel' and select 'Add/Remove Programs'. Select 'CAMPBELL SCIENTIFIC SC-USB Drivers', click the 'Add/Remove' button and follow the prompts.

3.1.4 Determining which COM Port the SC-USB has been Assigned

The above installation processes relies on parts of the Windows operating system to assign a com port number to SC-USB. Often this will be the next port number that is free. However, if other devices have been installed in the past (some of which may no longer be plugged in), it may be assigned a higher com port number.

To check which COM port it has got, you can simply monitor the appearance of a new com port in the list of com ports offered in your software package (e.g., LoggerNet) before and after the installation, or if there is any doubt, look in the Windows Device Manager list under the ports section (access via the control panel).

As shown below the com port number is shown at the end of the description.



In some cases a PC program may not offer the SC-USB COM port in its selection list of available COM ports. Recent versions of Campbell Scientific packages allow you to manually type the COM port into the selection window to overcome this.

Older software may also limit you only up to COM4. In that case you would need to free lower com port numbers (by deinstalling an unused COM port) and move the assignment of the SC-USB. To do this right click on the SC-USB in the device manager screen (as shown above) and select properties. Then select Port Settings and then the Advanced button. In the next screen you have the option to change the COM port number to another free number. 'OK' any change you make and close the Device Manager screen before reopening it to confirm the change (it does not automatically refresh this change).

NOTE

The Baud rate settings in the driver/properties setting have no influence on the operation of the SC-USB. The speed of communication to the datalogger is normally determined automatically by the SC-USB, although it can be set in other ways. See the sections below.

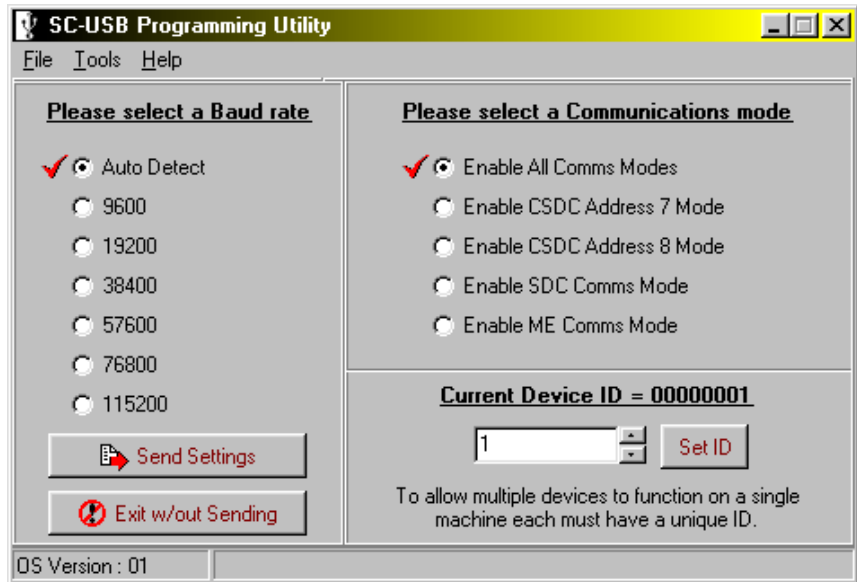
3.2 Set-up Modes – the SC_USB Programming Utility

The Set-up button on the SC_USB.exe utility allows you to configure the SC-USB interface to work with the supported dataloggers and peripherals and their modes of operation. Before pressing the Set-up button, ensure that the correct COM port is selected.

NOTE

This program is only needed for some older dataloggers or datalogger operating systems.

The set-up screen is shown below, and the set-up modes are explained in detail.



3.2.1 Settings

3.2.1.1 Auto Detect (Automatic Baud Rate Detection)

Auto Detect will try to connect at the highest asynchronous baud rate the datalogger can support. This can be used in most cases. The exceptions are:

- Upgrading a datalogger operating system using CSOS.EXE, when the SC-USB must be set to 19200 baud.
- Using Call Back, when you must fix the baud rate.
- Using a 21X or CR7 datalogger, where the baud rate needs to be fixed and set to either 9600 or 76800 baud (OS dependent).
- Using a non-PakBus CR23X-TD datalogger – the baud rate may be adjusted to the maximum supported by the datalogger. (By default it will run at 9600 baud.) See Section 5.2 for more details.

Auto Detect is the Factory default.

3.2.1.2 Selecting a Fixed Baud Rate

Bit rate selections available are 9600, 19200, 38400, 57600, 76800 and 115200 baud as shown in the screenshot above. Select the highest rate supported by the dataloggers being used.

3.2.1.3 Enable All Comms Modes (Automatic Mode Detection)

Selecting 'Enable all Comms Modes' automatically connects to the datalogger using the communications method that uses the least physical hardware resources. The priorities from highest to lowest are CSDC, SDC and finally Modem Enable (ME) mode. The default mode can be used in most cases.

Exceptions are:

- When other SDC or CSDC peripherals are being used, in which case a free address must be selected.
- When Call Back is being used it may be necessary to fix the communication method to ME.
- When using non-PakBus TD dataloggers, where the mode must be set to ME.
- When using a CR5000 datalogger with an operating system version earlier than 2.0, where the mode must be set to ME.

Enable All Comms Modes is the Factory default.

3.2.1.4 Enable CSDC Address 7 Mode

Selecting 'Enable CSDC Address 7 Mode' will force the SC-USB to *only* respond as the CSDC device with SDC address 7. This is useful when you have another SDC-Concurrent device connected on the CSI I/O port. The modem enable line (pin 5) is not used and is free for other use. CSDC mode allows concurrent communication sessions. It is currently supported by PakBus dataloggers and recent versions of the CR5000 operating system.

3.2.1.5 Enable CSDC Address 8 Mode

Selecting 'Enable CSDC Address 8 Mode' will force the SC-USB to *only* respond as the CSDC device with SDC address 8. This is useful when you have another CSDC device connected on the CS I/O port. The modem enable line (pin 5) is not used and is free for other use. CSDC mode allows concurrent communication sessions. It is currently supported by PakBus dataloggers and recent versions of the CR5000 operating system.

3.2.1.6 Enable SDC Comms Mode

Selecting 'Enable SDC Comms Mode' will force the SC-USB to *only* respond as an SDC communication device at address 9. In this mode asynchronous communication is used at the chosen bit rate. The Modem Enable line (pin 5) is not used and is free for other use. SDC mode allows the SC-USB to be connected in parallel with modem devices. This mode is only supported in CR510, CR10X and CR23X dataloggers with post-2002 standard (non-PakBus) operating systems.

3.2.1.7 Enable ME Comms Mode

Selecting 'Enable ME Comms Mode' will force the SC-USB to *only* respond as a modem-enabled device. This would only be used when all other connection modes are being used by other peripherals or for compatibility with an older datalogger or operating system.

3.2.1.8 Set ID

Set ID is used to make the SC-USB interface unique. This is useful if you have more than one SC-USB interface connected to the same PC at the same time. The default ID as supplied is 00000001.

NOTE

Close the SC-USB utility when you have finished using it, as its method of polling the SC-USB may cause the PC to become very slow when running other programs.

3.2.2 Operating System (OS) Downloads

The OS download button in the Sc_USB.exe utility allows you to upgrade the OS in the SC-USB to take advantage of new features and allow new product support.

CAUTION

When using this option do not unplug the SC-USB or turn off the computer, otherwise the operating system may be corrupted and the SC-USB may then need to be returned to the factory for repair.

4. Using the SC-USB with Campbell Software and Hardware

4.1 LoggerNet EZSetup or Standard Setup

The SC-USB does not appear as any special device within Campbell Scientific software packages. Instead, it appears as a new COM port to both Windows and Campbell software. To use the SC-USB, if using the EZSetup Wizard, you need to specify a "Direct Connect" and then select the new COM port number assigned to the SC-USB (see 3.1.4 above). If using the setup tool in LoggerNet, you need to Add a Root device, select the COM port option and select the relevant com port number; then Add the datalogger or Pakbusport directly to the new ComPort.

In general, the baud rate settings that are offered in the EZSetup or Setup screens can be left at the default settings as they do not apply to the SC-USB which determines the best speed to use by automatically negotiating this with datalogger (see Section 3.2 for exceptions).

4.2 Using the Device Configuration (DevConfig) Utility

4.2.1 Accessing DevConfig

The SC-USB can be used with DevConfig to change datalogger settings. To do this, open DevConfig and connect the datalogger to the PC's USB port via the SC-USB. Select the appropriate datalogger from the list. For the COM

port, select the new COM port number assigned to the SC-USB (see Section 3.1.4), and then press Connect.

4.2.2 Downloading a Datalogger OS

The SC-USB can be used to download operating systems to the CR510, CR10X, and 23X dataloggers using this tool. The SC-USB must be set to a fixed baud rate and this baud rate must match DevConfig. You cannot load operating systems into the CR800, CR850, CR1000, or CR3000 dataloggers by selecting the “Send OS” tab in DevConfig because these dataloggers only support the low-level OS upload via the RS-232 port. However, you can load an operating system into these dataloggers using the option to load a program into the datalogger (under Logger Control) and changing the file type to operating system. (You can load the OS with other Campbell Scientific programs too using the program load options.) This technique does not reset as many settings as the lower level “Send OS” option.

4.3 Use with the DSP4

It is possible to use the SC-USB to communicate with most dataloggers when they are used with a DSP4 Heads-Up Display. As with other means of communication, display of data on the DSP4 is suspended during communication.

NOTE

For the CR5000 it is *not* possible to run any program that sends data to the DSP4 and then communicate with the SC-USB. This is because the CR5000 reserves the CS I/O port solely for use by the DSP4. Contact Campbell Scientific for further information.

5. Troubleshooting

5.1 Installation

If when installing the SC-USB the Hardware installation wizard is not displayed immediately, try rebooting the PC with the SC-USB plugged in or run the Add Hardware option in the Control Panel. If the wizard still does not appear, it is possible that drivers are already installed for the SC-USB; check using the Device Manager.

The SC-USB uses a chipset made by FTDI. Many other USB devices also use this chipset. As a consequence, the SC-USB and other FTDI devices may share some common driver files. To ensure that the latest files are used, install the SC-USB after the other devices are installed. Also be aware that re-installing an older device last may result in unreliability, as older drivers may overwrite the newer ones without any warning.

5.2 Software Settings

Generally, no specific settings are required to use the SC-USB with Campbell Scientific software. The datalogger should be entered in the device map as if it were directly connected to the COM port assigned to the SC-USB. The baud rate setting has no effect on the speed that the SC-USB communicates with the datalogger. This is normally determined automatically. The 21X and CR7 and non-PakBus TD dataloggers do not support automatic baud rate detection. In

these cases the SC-USB needs to be set to a fixed baud rate. This can either be done using the SC-USB utility program (see Section 3.2) or if your software package supports it; for example by using the 'Generic modem' option of LoggerNet, the baud rate can be set by sending a single character code at the start of each call to the datalogger. The codes are shown in the table below.

ASCII Character	Baud Rate
1	9600
2	38400
3	57600
4	115200
5	76800
6	115200

The SC-USB can be left in auto mode; the numeric characters will not be echoed.

If using the generic modem option of LoggerNet, you would enter a generic modem between the COM port and the datalogger, and enter "1" in the dial script to force the baud rate to 9600 baud; the other hardware settings can be left at their default values.

Setting the baud rate using the latter method is useful if you use the SC-USB to move between a number of different types of dataloggers and wish to avoid having to reconfigure it too often.

If you experience any problems using this software, please report this to Campbell Scientific, giving full details with any solution if available, for possible inclusion in a future release of this User Guide.

5.3 Electronic Interference

Electronic emissions emanating from the SC-USB interface itself are very low. However, while verifying this during the development of the SC-USB, Campbell Scientific became aware that many PCs have poor filtering of emissions from their USB ports.

These emissions become apparent when a cable is plugged into the USB port, as the cable acts as an antenna. If any such PC emissions (coming from the SC-USB cable) cause problems with other equipment, you may be able to reduce such noise by adding a clip-on ferrite choke to the SC-USB cable. Position the choke on the cable close to the USB connector. The size of ferrite is dependent on the level and frequency of noise emitted by the PC, and so needs to be selected by trial and error. If in doubt, seek advice from the PC manufacturer.

Campbell Scientific Companies

Campbell Scientific, Inc. (CSI)

815 West 1800 North
Logan, Utah 84321
UNITED STATES
www.campbellsci.com • info@campbellsci.com

Campbell Scientific Africa Pty. Ltd. (CSAf)

PO Box 2450
Somerset West 7129
SOUTH AFRICA
www.csafrica.co.za • cleroux@csafrica.co.za

Campbell Scientific Australia Pty. Ltd. (CSA)

PO Box 444
Thuringowa Central
QLD 4812 AUSTRALIA
www.campbellsci.com.au • info@campbellsci.com.au

Campbell Scientific do Brazil Ltda. (CSB)

Rua Luisa Crapsi Orsi, 15 Butantã
CEP: 005543-000 São Paulo SP BRAZIL
www.campbellsci.com.br • suporte@campbellsci.com.br

Campbell Scientific Canada Corp. (CSC)

11564 - 149th Street NW
Edmonton, Alberta T5M 1W7
CANADA
www.campbellsci.ca • dataloggers@campbellsci.ca

Campbell Scientific Centro Caribe S.A. (CSCC)

300 N Cementerio, Edificio Breller
Santo Domingo, Heredia 40305
COSTA RICA
www.campbellsci.cc • info@campbellsci.cc

Campbell Scientific Ltd. (CSL)

Campbell Park
80 Hathern Road
Shepshed, Loughborough LE12 9GX
UNITED KINGDOM
www.campbellsci.co.uk • sales@campbellsci.co.uk

Campbell Scientific Ltd. (France)

3 Avenue de la Division Leclerc
92160 ANTONY
FRANCE
www.campbellsci.fr • info@campbellsci.fr

Campbell Scientific Spain, S. L.

Avda. Pompeu Fabra 7-9, local 1
08024 Barcelona
SPAIN
www.campbellsci.es • info@campbellsci.es

Please visit www.campbellsci.com to obtain contact information for your local US or International representative.