

LNDB

LoggerNet Database Software

LNDB moves data from one LoggerNet server into a single database. The two main components of LNDB are LNDB Manager and LNDB Engine. LNDB Manager is used to set up a database and select the datalogger data tables that will be stored in the database. It also provides tools to monitor the LNDB Engine and to review the database data.

LNDB Engine runs as a service and sends the selected data from the LoggerNet data cache to the database. Additionally, LNDB includes utilities for importing and exporting data, and generating simple reports from your database data.

Supported Databases¹

LNDB has been tested and shown to work with the following databases:

- Microsoft® SQL Server® 2005 Express
- Microsoft® SQL Server® 2008 Express
- Microsoft® SQL Server® Compact 3.5
- MySQL 5.0 and 5.1 (with MySQL 3.51.27 or 5.1.6 ODBC database driver²)

Features

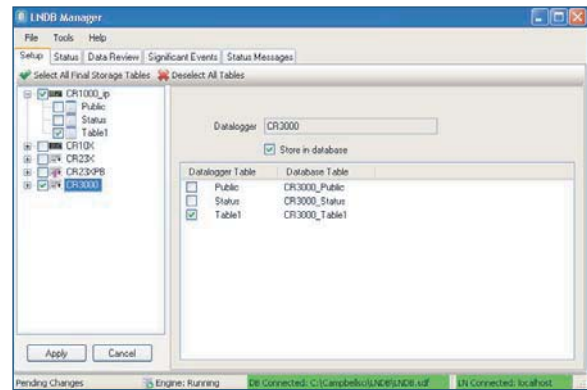
- Move data from selected LoggerNet tables into a database
- Review database data
- Monitor the LNDB Engine
- Import data from a data file into a database table
- Export data from a database table into a data file
- Generate simple reports from database data with just a few mouse clicks

Computer Requirements

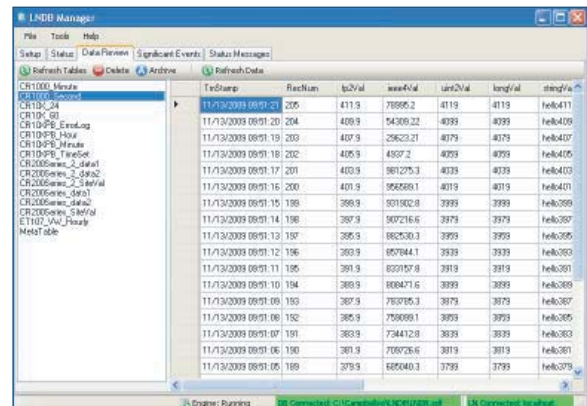
LNDB runs on Windows® XP, Windows® Vista, or Windows® 7.

¹LNDB may work with other versions of SQL Server Express, SQL Server Compact, or MySQL.

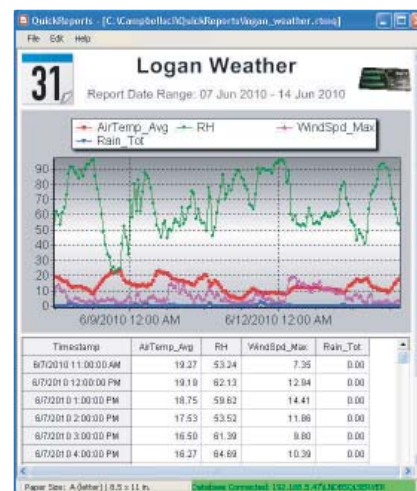
²Earlier versions of 5.x ODBC database drivers are not compatible with LNDB.



When a station is highlighted in the left tree, the station setup screen is shown. On the station setup screen, tables can be enabled/disabled for storage.



The Data Review tab shows tables and data from the database. When a table on the left side is selected, the data for the table is shown on the right side.



QuickReports allows you to quickly generate simple reports from your database data.

