

# INSTRUCTION MANUAL



## CURS100 100 Ohm Current Shunt Terminal Input Module

Revision: 5/07



Copyright © 1996-2007  
Campbell Scientific, Inc.

## WARRANTY AND ASSISTANCE

This equipment is warranted by CAMPBELL SCIENTIFIC (CANADA) CORP. ("CSC") to be free from defects in materials and workmanship under normal use and service for **twelve (12) months** from date of shipment unless specified otherwise. \*\*\*\* **Batteries are not warranted.** \*\*\*\* CSC's obligation under this warranty is limited to repairing or replacing (at CSC's option) defective products. The customer shall assume all costs of removing, reinstalling, and shipping defective products to CSC. CSC will return such products by surface carrier prepaid. This warranty shall not apply to any CSC products which have been subjected to modification, misuse, neglect, accidents of nature, or shipping damage. This warranty is in lieu of all other warranties, expressed or implied, including warranties of merchantability or fitness for a particular purpose. CSC is not liable for special, indirect, incidental, or consequential damages.

Products may not be returned without prior authorization. To obtain a Return Merchandise Authorization (RMA), contact CAMPBELL SCIENTIFIC (CANADA) CORP., at (780) 454-2505. An RMA number will be issued in order to facilitate Repair Personnel in identifying an instrument upon arrival. Please write this number clearly on the outside of the shipping container. Include description of symptoms and all pertinent details.

CAMPBELL SCIENTIFIC (CANADA) CORP. does not accept collect calls.

Non-warranty products returned for repair should be accompanied by a purchase order to cover repair costs.



**CAMPBELL SCIENTIFIC**  
C A N A D A C O R P .

11564 - 149 street - edmonton - alberta - T5M 1W7  
tel 780.454.2505 fax 780.454.2655

[www.campbellsci.ca](http://www.campbellsci.ca)

# CURS100 Table of Contents

---

PDF viewers note: These page numbers refer to the printed version of this document. Use the Adobe Acrobat® bookmarks tab for links to specific sections.

<b>1. Function</b>	<b>1</b>
<b>2. Specifications</b>	<b>1</b>
<b>3. Measurement Concepts</b>	<b>2</b>
3.1 Differential Measurement	3
3.2 Common-Mode Range	3
3.3 Ground Offset on Single-Ended Measurements	3
3.3.1 CR10(X), CR23X, CR800, CR850, CR1000, CR3000, CR5000	3
3.3.2 21X, CR7, CR9000(X)	4
<b>4. Transducer Wiring</b>	<b>4</b>
4.1 Two-Wire Transducers	4
4.1.1 Possible Ground Loop Problems	5
4.1.2 Minimum Supply Voltage	5
4.2 Three-Wire Transducers	5
4.3 4-Wire Transducers	6
<b>5. Sensor and Programming Example</b>	<b>7</b>
5.1 Voltage Range	7
5.2 Calculating Multiplier and Offset—An Example	7
5.3 CR10(X) Program Example	9
5.4 CR23X Program Example	9
5.5 CR7 Program Example	9
5.6 CR9000(X) Program Example	9
5.7 CR1000 Program Example	10

## Figures

1-1. Terminal Input Module	1
2-1. CURS100 Schematic	2
4-1. 2-Wire with Datalogger Power	4
4-2. 2-Wire with External Power	4
4-3. 2-Wire Supply Voltage	5
4-4. 3-Wire with Datalogger Power	6
4-5. 3-Wire with External Power	6
4-6. 4-Wire with Datalogger Power	6
4-7. 4-Wire with External Power	7

## Tables

2-1. Resistor Specifications	1
------------------------------	---



# ***CURS100 100 Ohm Current Shunt Terminal Input Module***

---

## **1. Function**

Terminal input modules connect directly to the datalogger's input terminals to provide completion resistors for resistive bridge measurements, voltage dividers, and precision current shunts. The CURS100 converts a current signal (e.g., 4-20 mA) to a voltage that is measured by the datalogger. The 100 ohm resistor used for the current shunt allows currents up to 25 mA to be read on a  $\pm 2500$  mV range (CR10, CR10X) and currents up to 50 mA to be read on a  $\pm 5000$  mV range (21X, CR23X, CR7, CR800, CR850, CR1000, CR3000, CR5000, CR9000, CR9000X).

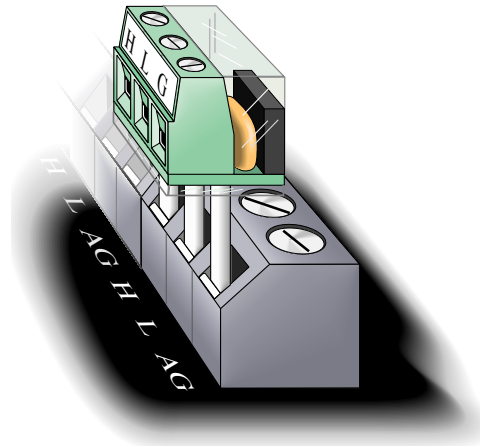


FIGURE 1-1. Terminal Input Module

## **2. Specifications**

<b>TABLE 2-1. Resistor Specifications</b>	
<b>100 Ohm Shunt Resistor</b>	
Tolerance @ 25 °C	$\pm 0.01\%$
Temperature coefficient	8 ppm/°C
Power rating	0.25 W

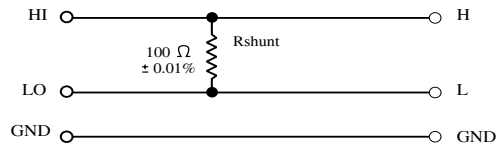


FIGURE 2-1. CURS100 Schematic

The CURS100 has three pins: high, low, and ground; these pins are the correct spacing to insert directly into the datalogger's high, low, and ground terminals (≡ on 21X, CR23X, CR7, CR800, CR850, CR1000, CR3000, CR5000, or CR9000(X) or AG on CR10(X)).

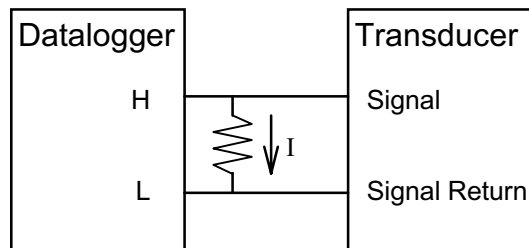
### 3. Measurement Concepts

Transducers that have current as an output signal consist of three parts: a sensor, a current transducer (quite often integrated with the sensor), and a power supply. The power supply provides the required power to the sensor and transducer. The sensor signal changes with the phenomenon being measured. The current transducer converts the sensor signal into a current signal. The current output changes in a known way with the phenomenon being measured.

An advantage of current loop transducers over voltage output transducers is the current signal remains constant over very long leads.

Two disadvantages with current loop transducers are as follows. First, most transducers require constant current from the power supply, adding cost and size. Secondly, the conditioned output quality may not be as good as a similar unconditioned sensor being measured directly by a datalogger.

The output of the transducer is wired so the current must flow through the 100 ohm resistor in the CURS100.



Ohm's law describes how a voltage (V) is generated by the signal current (I) through a completion resistor (R):

$$V=I (R).$$

This voltage is measured by the datalogger.

### 3.1 Differential Measurement

The voltage across the completion resistor is measured with the differential voltage measurement. Use VoltDiff for the CRBasic dataloggers (e.g., CR1000, CR5000, or CR9000(X)). Use Instruction 2 for Edlog dataloggers (e.g., CR10X, CR7). The differential voltage measurement measures the difference in voltage between the low and high terminals. The CURS100 connects the resistor between the high and low terminals.

### 3.2 Common-Mode Range

In order to make a voltage measurement, the voltage at the channel inputs must be within the datalogger's common mode range. The common mode range is the voltage range, relative to ground within which both inputs of a differential channel must lie in order for the differential measurement to be made. The common mode range is  $\pm 2.5$  volts for the CR10(X) and  $\pm 5$  volts for the 21X, CR23X, CR800, CR850, CR1000, CR3000, CR5000, CR9000(X), and CR7.

---

**NOTE**

One side of the completion resistor is attached to the datalogger's ground (AG for the CR10(X), and  $\equiv$  for the CR23X, CR800, CR850, CR1000, CR3000, CR5000, 21X, CR7, and CR9000(X)) to keep the measurement within the datalogger's common mode range.

---

### 3.3 Ground Offset on Single-Ended Measurements

When current flows through the ground path on the datalogger, the actual voltage at the different ground terminals will be slightly different. The small offset voltages between the ground points are caused because there is resistance (albeit small) in the ground path and current flowing through a resistance results in a voltage drop. The offsets in ground voltage cause offsets in single-ended voltage measurements.

#### 3.3.1 CR10(X), CR23X, CR800, CR850, CR1000, CR3000, CR5000

These dataloggers were designed with separate analog ground (AG on CR10X,  $\equiv$  on CR23X, CR800, CR850, CR3000, CR1000, and CR5000) and ground (G) terminals. Ground (G) terminals are used for power and shield connections where there is likely to be current flowing. Ground is connected directly to earth ground (a grounding rod) to provide a path to earth for transient voltages. By avoiding the use of analog ground as a current path, analog ground terminals will stay at the same ground potential and not cause offsets in single-ended measurements.

---

**NOTE**

All ground connections on these dataloggers should be made at a G terminal. Do NOT use the CURS100's ground terminal which connects to analog ground.

---

### 3.3.2 21X, CR7, CR9000(X)

The 21X, CR7, and CR9000(X) dataloggers do not have a separate analog ground. The 21X may have a slightly higher ground path resistance than the CR7 or CR9000(X). When current is allowed to flow in the ground path, the offset voltages on single-ended measurements can be as high as several millivolts. The more current signals measured, the larger this offset voltage can become. To reduce the amount of current flowing in the 21X ground path, it is recommended that a separate power supply be used to power current transducers.

## 4. Transducer Wiring

Current transducers differ mainly in how they are powered and in the relative isolation of the current output. In this section the transducers are grouped by the total number of wires the transducer uses to obtain power and output the current.

### 4.1 Two-Wire Transducers

In a two wire transducer the power supply is in series within the current loop. The transducer regulates the amount of current that flows; the current drawn from the battery is exactly the current used as a signal.

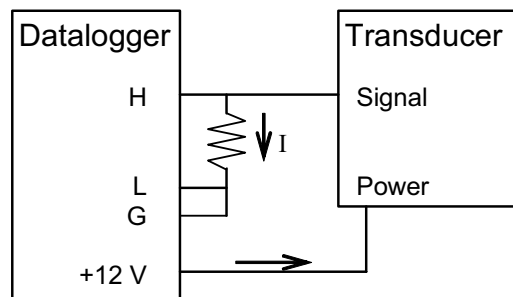


FIGURE 4-1. 2-Wire with Datalogger Power

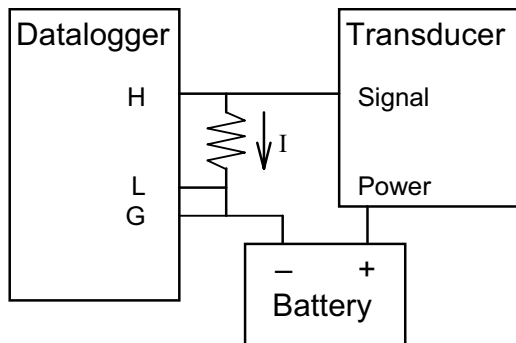


FIGURE 4-2. 2-Wire with External Power

### 4.1.1 Possible Ground Loop Problems

The resistor must be grounded at the datalogger to ensure that the measurement is within common mode range. The signal (or low) output on the transducer is higher than the datalogger ground by the voltage drop across the resistor. A ground-loop error may occur if the signal output is not electrically isolated but is connected to the sensor's case. If such a sensor is in contact with earth ground (i.e., a pressure transducer in a well or stream) an alternative path for current flow is established through earth ground to the datalogger earth ground. This path is in parallel with the path from the signal output through the resistor; hence not all the current will pass through the resistor and the measured voltage will be too low.

### 4.1.2 Minimum Supply Voltage

When the power supply is in the current loop, as is the case in a 2 wire transducer, it is necessary to consider the effect of the voltage drop across the resistor on the voltage applied to the transducer.

For example, suppose a 4-20 mA transducer requires at least 9 volts to operate correctly and the system is powered by a 12 volt battery. The voltage the transducer sees is the battery voltage minus the voltage drop in the rest of the current loop. At 20 mA output, the voltage drop across the 100 ohm resistor is 2 volts. When the battery is at 12 volts, this leaves 10 volts for the transducer and everything is fine. However, if the battery voltage drops to 11 volts, a 20 mA current will leave just 9 volts for the transducer. In this case, when the battery drops below 11 volts, the output of the transducer may be in error.

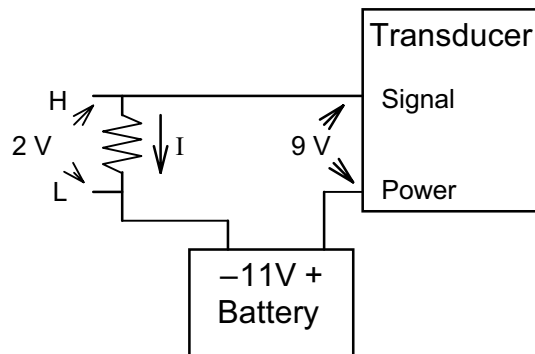


FIGURE 4-3. 2-Wire Supply Voltage

## 4.2 Three-Wire Transducers

A three wire current loop transducer has the power supply connected directly to the transducer. The voltage of the power supply is the voltage applied to the transducer. The current output returns to power ground. Datalogger ground is connected to sensor ground and the current output by the sensor must pass through the resistor before going to ground.

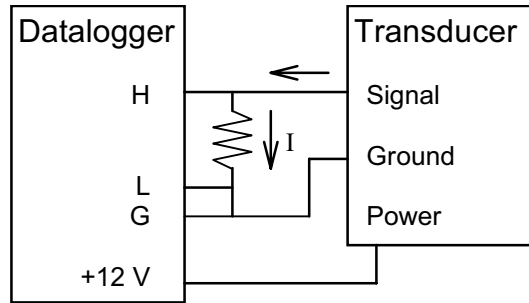


FIGURE 4-4. 3-Wire with Datalogger Power

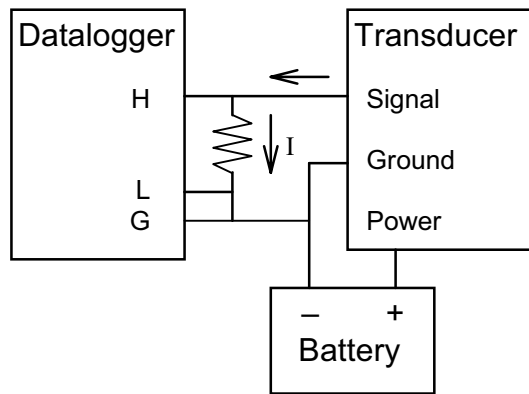


FIGURE 4-5. 3-Wire with External Power

### 4.3 4-Wire Transducers

A four wire transducer has separate wires for power input and ground and for signal output and ground. The signal ground may or may not be internally tied to the power ground. Some transducers have completely isolated outputs.

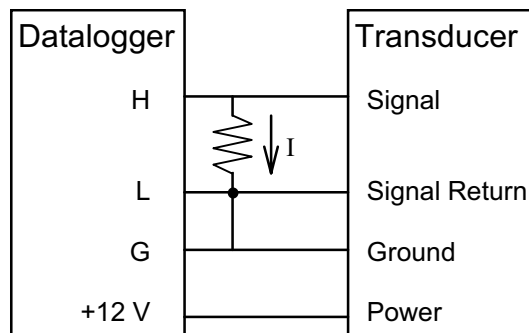


FIGURE 4-6. 4-Wire with Datalogger Power

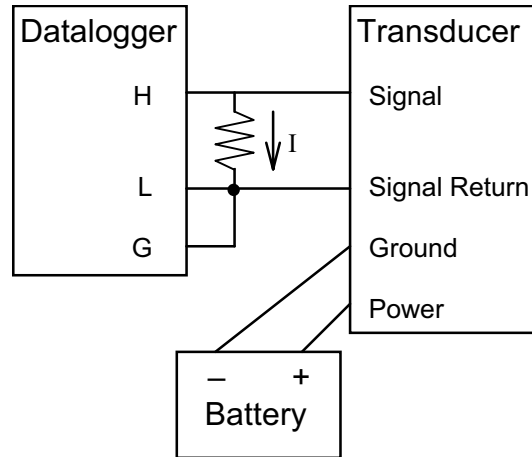


FIGURE 4-7. 4-Wire with External Power

## 5. Sensor and Programming Example

In the following example, the input voltage range and multiplier and offset are calculated for a 4 to 20 mA output pressure transducer. Examples showing the differential measurement made on channel 1 are then given for the CR10(X), 21X, CR7, CR9000(X), and CR1000 dataloggers; programming for the CR800, CR850, CR3000, and CR5000 is virtually identical to the CR1000.

### 5.1 Voltage Range

The voltage range on which to make the measurement should be the smallest range that will accommodate the maximum signal the sensor will output. Using the smallest possible range will give the best resolution.

The voltage across the resistor,  $V$ , is equal to the resistance (100 ohms) multiplied by the current,  $I$ .

$$V = 100 I$$

The maximum voltage occurs at the maximum current. Thus, a 4 to 20 mA transducer will output its maximum voltage at 20 mA.

$$V = 100 \text{ ohms} \times 0.02 \text{ A} = 2 \text{ V}$$

An output of 2 volts is measured on the  $\pm 2500$  mV range on the CR10(X) or on the  $\pm 5000$  mV range on the 21X, CR7, CR1000, CR3000, CR800, CR850, CR5000, or CR9000(X).

### 5.2 Calculating Multiplier and Offset—An Example

The multiplier and the offset are the slope and y-intercept of a line and are computed with Ohm's law and a linear fit.

For example, measure a current loop transducer that detects pressure with the CR10(X) where the sensor specifications are as follows:

Transducer range -- 200 to 700 psi

Transducer output range -- 4 to 20 mA

CR10(X) range --  $\pm 2500$  mV

The transducer will output 4 mA at 200 psi and 20 mA at 700 psi. Using Ohm's law, the voltage across the resistor at 200 psi is

$$V = I \times R$$

$$V = 0.004 \times 100$$

$$V = 0.4 \text{ V or } 400 \text{ mV}$$

and at 700 psi is

$$V = 0.020 \times 100$$

$$V = 2.0 \text{ V or } 2000 \text{ mV}$$

Since the datalogger measures in mV, the multiplier (or slope) must be in units of psi/mV. Therefore, the y values have the units psi and the x values mV.

The equation of a line is

$$(y - y_1) = m (x - x_1)$$

Solve the equation for m that is the slope of the line (or multiplier).

$$m = \frac{700 \text{ psi} - 200 \text{ psi}}{2000 \text{ mV} - 400 \text{ mV}} = 0.3125 \frac{\text{psi}}{\text{mV}}$$

Now replace the known values to determine the intercept (or offset). Where  $y = m(x) + b$

$$200 \text{ psi} = 0.3125 \frac{\text{psi}}{\text{mV}} \cdot 400 \text{ mV} + b$$

$$b = 200 - 0.3125 \cdot 400 = 75 \text{ psi}$$

$m = \text{multiplier (slope)} = 0.3125$  and

$b = \text{the offset (intercept)} = 75.0$ .

### 5.3 CR10(X) Program Example

1: Volt (Diff) (P2)		
1:	1	Reps
2:	25	$\pm 2500$ mV 60 Hz Rejection Range
3:	1	DIFF Channel
4:	1	Loc [ Press_psi ]
5:	0.3125	Mult
6:	75	Offset

### 5.4 CR23X Program Example

1: Volt (Diff) (P2)		
1:	1	Reps
2:	25	$\pm 5000$ mV, 60 Hz Reject, Fast Range
3:	1	DIFF Channel
4:	1	Loc [ Press_psi ]
5:	0.3125	Mult
6:	75	Offset

### 5.5 CR7 Program Example

1: Volt (Diff) (P2)		
1:	1	Reps
2:	8	$\pm 5000$ mV Slow Range
3:	1	In Card
4:	1	DIFF Channel
5:	1	Loc [ Press_psi ]
6:	0.3125	Mult
7:	75	Offset

### 5.6 CR9000(X) Program Example

VoltDiff(Press\_psi, 1, mV5000, 5, 1, 1, 0, 0, 0.3125, 75)

## 5.7 CR1000 Program Example

*'CR1000 program example for sensor with 4-20mA output.*

*'Assuming a flow meter that outputs a 4-20mA signal representing 0 - 100 gal/min,  
'the voltage across the resistor at 0 gal/min = 4mA \* 100 ohms = 400mV,  
'and at 100 gal/min is 20mA \* 100 ohms = 2000mV. The change in mV is  
'2000mV - 400mV = 1600mV for 0 - 100 gal/min flow rate.*

*'The measurement result (X) for the VoltDiff instruction is mV. The  
'multiplier to convert mV to gal/min is: mV \* 100gal/min / 1600mV = 0.0625,  
'the offset is 400mV \* .0625 = -25.0.*

Public Measure

DataTable (Hourly,True,-1)

    DataInterval (0,60,Min,0)

    Average (1,Measure,IEEE4,0)

EndTable

BeginProg

Scan (1,Sec,1,0)

*'Generic 4-20 mA Input measurement Measure:*

    VoltDiff (Measure,1,mV2500,1,True,0,\_60Hz,0.0625,-25.0)

    CallTable (Hourly)

NextScan

EndProg



## **Campbell Scientific Companies**

---

### **Campbell Scientific, Inc. (CSI)**

815 West 1800 North  
Logan, Utah 84321  
UNITED STATES  
[www.campbellsci.com](http://www.campbellsci.com)  
[info@campbellsci.com](mailto:info@campbellsci.com)

### **Campbell Scientific Africa Pty. Ltd. (CSAf)**

PO Box 2450  
Somerset West 7129  
SOUTH AFRICA  
[www.csafrica.co.za](http://www.csafrica.co.za)  
[cleroux@csafrica.co.za](mailto:cleroux@csafrica.co.za)

### **Campbell Scientific Australia Pty. Ltd. (CSA)**

PO Box 444  
Thuringowa Central  
QLD 4812 AUSTRALIA  
[www.campbellsci.com.au](http://www.campbellsci.com.au)  
[info@campbellsci.com.au](mailto:info@campbellsci.com.au)

### **Campbell Scientific do Brazil Ltda. (CSB)**

Rua Luisa Crapsi Orsi, 15 Butantã  
CEP: 005543-000 São Paulo SP BRAZIL  
[www.campbellsci.com.br](http://www.campbellsci.com.br)  
[suporte@campbellsci.com.br](mailto:suporte@campbellsci.com.br)

### **Campbell Scientific Canada Corp. (CSC)**

11564 - 149th Street NW  
Edmonton, Alberta T5M 1W7  
CANADA  
[www.campbellsci.ca](http://www.campbellsci.ca)  
[dataloggers@campbellsci.ca](mailto:dataloggers@campbellsci.ca)

### **Campbell Scientific Ltd. (CSL)**

Campbell Park  
80 Hathern Road  
Shepshed, Loughborough LE12 9GX  
UNITED KINGDOM  
[www.campbellsci.co.uk](http://www.campbellsci.co.uk)  
[sales@campbellsci.co.uk](mailto:sales@campbellsci.co.uk)

### **Campbell Scientific Ltd. (France)**

Miniparc du Verger - Bat. H  
1, rue de Terre Neuve - Les Ulis  
91967 COURTABOEUF CEDEX  
FRANCE  
[www.campbellsci.fr](http://www.campbellsci.fr)  
[campbell.scientific@wanadoo.fr](mailto:campbell.scientific@wanadoo.fr)

### **Campbell Scientific Spain, S. L.**

Psg. Font 14, local 8  
08013 Barcelona  
SPAIN  
[www.campbellsci.es](http://www.campbellsci.es)  
[info@campbellsci.es](mailto:info@campbellsci.es)